

Product datasheet for **TA334135**

Rprml Rabbit Polyclonal Antibody

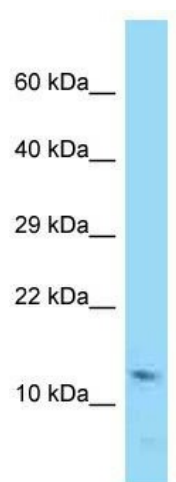
Product data:

Product Type:	Primary Antibodies
Applications:	WB
Recommended Dilution:	WB
Reactivity:	Mouse
Host:	Rabbit
Isotype:	IgG
Clonality:	Polyclonal
Immunogen:	The immunogen for Anti-Rprml Antibody is: synthetic peptide directed towards the middle region of Rprml. Synthetic peptide located within the following region: PLTASDGVPA GLAPDERSLWVSRVAQIAVLCVLSLTVFGVFFLGCNLLI
Formulation:	Liquid. Purified antibody supplied in 1x PBS buffer with 0.09% (w/v) sodium azide and 2% sucrose.
Purification:	Affinity Purified
Conjugation:	Unconjugated
Storage:	Store at -20°C as received.
Stability:	Stable for 12 months from date of receipt.
Predicted Protein Size:	12 kDa
Gene Name:	reprimo-like
Database Link:	NP_001028384 Entrez Gene 104582 Mouse Q3URD2
Background:	The function of this protein remains unknown.
Synonyms:	MGC43894; MGC131790; reprimo-like
Note:	Immunogen sequence homology: Dog: 100%; Pig: 100%; Rat: 100%; Human: 100%; Mouse: 100%; Bovine: 100%; Guinea pig: 100%; Horse: 86%



[View online »](#)

Product images:



WB Suggested Anti-Rprml Antibody; Titration: 1.0 ug/ml; Positive Control: Mouse Pancreas