

## Product datasheet for **TA334134**

### **Tmem102 Rabbit Polyclonal Antibody**

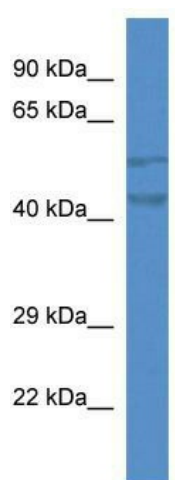
#### **Product data:**

Product Type:	Primary Antibodies
Applications:	WB
Recommended Dilution:	WB
Reactivity:	Mouse
Host:	Rabbit
Isotype:	IgG
Clonality:	Polyclonal
Immunogen:	The immunogen for Anti-Tmem102 Antibody: synthetic peptide corresponding to a region of Mouse. Synthetic peptide located within the following region: KDFVFALLGLVHRQDPRFPPQAELLLLGGIREGSLDLGHAPLGPYSRGP
Formulation:	Liquid. Purified antibody supplied in 1x PBS buffer with 0.09% (w/v) sodium azide and 2% sucrose.
Purification:	Affinity Purified
Conjugation:	Unconjugated
Storage:	Store at -20°C as received.
Stability:	Stable for 12 months from date of receipt.
Predicted Protein Size:	56 kDa
Gene Name:	transmembrane protein 102
Database Link:	<a href="#">NP_001028605</a> <a href="#">Entrez Gene 380705 Mouse</a> <a href="#">Q3UPR7</a>
Background:	The function of this protein remains unknown.
Synonyms:	CBAP; FLJ36878; OTTHUMP00000163819
Note:	Immunogen sequence homology: Dog: 100%; Pig: 100%; Human: 100%; Mouse: 100%; Rabbit: 100%; Rat: 93%; Horse: 93%; Bovine: 93%; Guinea pig: 93%



[View online »](#)

## Product images:



WB Suggested Anti-Tmem102 Antibody; Titration: 1.0 ug/ml; Positive Control: Mouse liver