

## Product datasheet for **TA334131**

### SLC22A10 Rabbit Polyclonal Antibody

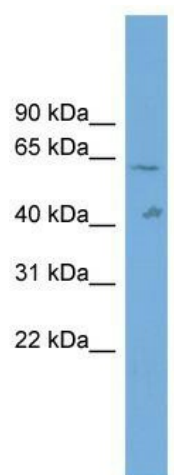
#### Product data:

Product Type:	Primary Antibodies
Applications:	WB
Recommended Dilution:	WB
Reactivity:	Human
Host:	Rabbit
Isotype:	IgG
Clonality:	Polyclonal
Immunogen:	The immunogen for Anti-SLC22A10 Antibody: synthetic peptide directed towards the middle region of human SLC22A10. Synthetic peptide located within the following region: QTLRVALACLIGIGCSAATFSSVAVHFIELIPTVLRARASGIDLTASRIGA
Formulation:	Liquid. Purified antibody supplied in 1x PBS buffer with 0.09% (w/v) sodium azide and 2% sucrose.
Purification:	Affinity Purified
Conjugation:	Unconjugated
Storage:	Store at -20°C as received.
Stability:	Stable for 12 months from date of receipt.
Predicted Protein Size:	60 kDa
Gene Name:	solute carrier family 22 member 10
Database Link:	<a href="#">NP_001034841</a> <a href="#">Entrez Gene 387775 Human</a> <a href="#">Q63ZE4</a>
Background:	The function of this protein remains unknown.
Synonyms:	hOAT5; OAT5
Note:	Immunogen sequence homology: Human: 100%
Protein Families:	Transmembrane



[View online »](#)

## Product images:



WB Suggested Anti-SLC22A10 Antibody Titration:  
0.2-1 ug/ml; ELISA Titer: 1:312500; Positive  
Control: 293T cell lysate