

Product datasheet for **TA334130**

ARHGAP11B Rabbit Polyclonal Antibody

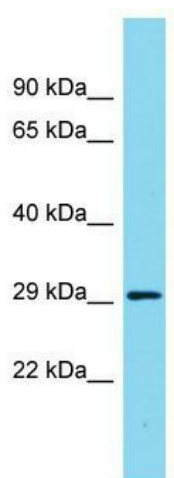
Product data:

Product Type:	Primary Antibodies
Applications:	WB
Recommended Dilution:	WB
Reactivity:	Human
Host:	Rabbit
Isotype:	IgG
Clonality:	Polyclonal
Immunogen:	The immunogen for Anti-ARHGAP11B Antibody is: synthetic peptide directed towards the C-terminal region of Human ARHGAP11B. Synthetic peptide located within the following region: MDSSNLAVIFAPNLLQTSEGHEKMSSNAEKKGYYQTLQSWKRYQPCWVLMV
Formulation:	Liquid. Purified antibody supplied in 1x PBS buffer with 0.09% (w/v) sodium azide and 2% sucrose. <i>Note that this product is shipped as lyophilized powder to China customers.</i>
Purification:	Affinity Purified
Conjugation:	Unconjugated
Storage:	Store at -20°C as received.
Stability:	Stable for 12 months from date of receipt.
Predicted Protein Size:	29 kDa
Gene Name:	Rho GTPase activating protein 11B
Database Link:	NP_001034930 Entrez Gene 89839 Human Q3KRB8
Background:	The function of this protein remains unknown.
Synonyms:	B'-T; B -T; FAM7B1
Note:	Immunogen sequence homology: Human: 100%; Pig: 85%; Rat: 85%; Horse: 85%; Mouse: 85%; Bovine: 85%; Guinea pig: 85%; Rabbit: 83%; Dog: 77%



[View online »](#)

Product images:



Host: Rabbit; Target Name: ARHGAP11B; Sample Tissue: Fetal Heart lysates; Antibody Dilution: 1.0 ug/ml.