

Product datasheet for TA334127

Dopamine Transporter (SLC6A3) Rabbit Polyclonal Antibody

Product data:

Product Type:	Primary Antibodies
Applications:	WB
Recommended Dilution:	WB
Reactivity:	Human
Host:	Rabbit
Isotype:	IgG
Clonality:	Polyclonal
Immunogen:	The immunogen for Anti-SLC6A3 Antibody: synthetic peptide directed towards the N terminal of human SLC6A3. Synthetic peptide located within the following region: HCNNSWNSPNCSDAHPGDSSGDSSGLNDFGTTPAAEYFERGVLHLHQSH
Formulation:	Liquid. Purified antibody supplied in 1x PBS buffer with 0.09% (w/v) sodium azide and 2% sucrose. <i>Note that this product is shipped as lyophilized powder to China customers.</i>
Purification:	Affinity Purified
Conjugation:	Unconjugated
Storage:	Store at -20°C as received.
Stability:	Stable for 12 months from date of receipt.
Predicted Protein Size:	68 kDa
Gene Name:	solute carrier family 6 member 3
Database Link:	NP_001035 Entrez Gene 6531 Human Q01959
Background:	This gene encodes a dopamine transporter which is a member of the sodium- and chloride-dependent neurotransmitter transporter family. The 3' UTR of this gene contains a 40 bp tandem repeat, referred to as a variable number tandem repeat or VNTR, which can be present in 3 to 11 copies. Variation in the number of repeats is associated with idiopathic epilepsy, attention-deficit hyperactivity disorder, dependence on alcohol and cocaine, susceptibility to Parkinson disease and protection against nicotine dependence.



[View online »](#)

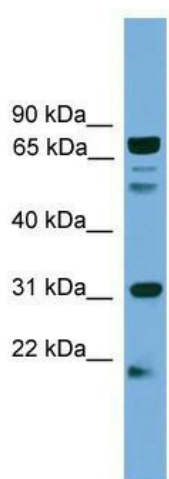
Synonyms: DAT; DAT1; PKDYS

Note: Immunogen sequence homology: Rat: 100%; Human: 100%; Mouse: 100%; Bovine: 100%; Pig: 93%; Horse: 93%; Rabbit: 93%; Guinea pig: 93%; Dog: 86%; Zebrafish: 79%

Protein Families: Druggable Genome, Transmembrane

Protein Pathways: Parkinson's disease

Product images:



WB Suggested Anti-SLC6A3 Antibody Titration:
0.2-1 ug/ml; ELISA Titer: 1:1562500; Positive
Control: HepG2 cell lysate