

## Product datasheet for **TA334126**

### **NKCC1 (SLC12A2) Rabbit Polyclonal Antibody**

#### **Product data:**

<b>Product Type:</b>	Primary Antibodies
<b>Applications:</b>	WB
<b>Recommended Dilution:</b>	WB
<b>Reactivity:</b>	Human
<b>Host:</b>	Rabbit
<b>Isotype:</b>	IgG
<b>Clonality:</b>	Polyclonal
<b>Immunogen:</b>	The immunogen for Anti-SLC12A2 Antibody: synthetic peptide directed towards the C terminal of human SLC12A2. Synthetic peptide located within the following region: IIAFEEIIEPYRLHEDDKEQDIADKMKEDPWRITDNELELYKTKTYRQI
<b>Formulation:</b>	Liquid. Purified antibody supplied in 1x PBS buffer with 0.09% (w/v) sodium azide and 2% sucrose. <i>Note that this product is shipped as lyophilized powder to China customers.</i>
<b>Purification:</b>	Affinity Purified
<b>Conjugation:</b>	Unconjugated
<b>Storage:</b>	Store at -20°C as received.
<b>Stability:</b>	Stable for 12 months from date of receipt.
<b>Predicted Protein Size:</b>	131 kDa
<b>Gene Name:</b>	solute carrier family 12 member 2
<b>Database Link:</b>	<a href="#">NP_001037</a> <a href="#">Entrez Gene 6558 Human P55011</a>
<b>Background:</b>	By moving chloride into epithelial cells, the Na-K-Cl cotransporter SLC12A2 aids transcellular movement of chloride across both secretory and absorptive epithelia. By moving chloride into epithelial cells, the Na-K-Cl cotransporter SLC12A2 aids transcellular movement of chloride across both secretory and absorptive epithelia (Payne et al., 1995). See also SLC12A1 (MIM 600839) and SLC12A3 (MIM 600968). [supplied by OMIM]
<b>Synonyms:</b>	BSC; BSC2; NKCC1; PPP1R141



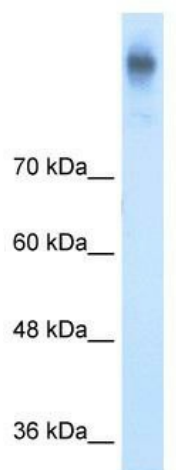
[View online »](#)

**Note:** Immunogen sequence homology: Dog: 100%; Pig: 100%; Rat: 100%; Horse: 100%; Human: 100%; Mouse: 100%; Bovine: 100%; Rabbit: 100%; Guinea pig: 92%; Zebrafish: 77%

**Protein Families:** Druggable Genome, Transmembrane

**Protein Pathways:** Vibrio cholerae infection

### Product images:



WB Suggested Anti-SLC12A2 Antibody Titration: 5.0 ug/ml; ELISA Titer: 1:1562500; Positive Control: DLD1 cell lysate SLC12A2 is supported by BioGPS gene expression data to be expressed in DLD1