

Product datasheet for **TA334124**

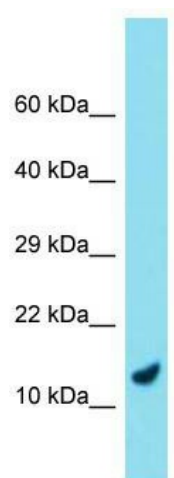
C9orf116 Rabbit Polyclonal Antibody

Product data:

Product Type:	Primary Antibodies
Applications:	WB
Recommended Dilution:	WB
Reactivity:	Human
Host:	Rabbit
Isotype:	IgG
Clonality:	Polyclonal
Immunogen:	The immunogen for Anti-C9orf116 Antibody is: synthetic peptide directed towards the N-terminal region of Human C9orf116. Synthetic peptide located within the following region: NNPGWFRGYRTQKAVSVYRTSNQAYGSRAPTVMHPKVFYPNSNKFSQQL
Formulation:	Liquid. Purified antibody supplied in 1x PBS buffer with 0.09% (w/v) sodium azide and 2% sucrose. <i>Note that this product is shipped as lyophilized powder to China customers.</i>
Purification:	Affinity Purified
Conjugation:	Unconjugated
Storage:	Store at -20°C as received.
Stability:	Stable for 12 months from date of receipt.
Predicted Protein Size:	14 kDa
Gene Name:	chromosome 9 open reading frame 116
Database Link:	NP_001041730 Entrez Gene 138162 Human Q5BN46
Background:	The function of this protein remains unknown.
Synonyms:	PIERCE1; RbEST47
Note:	Immunogen sequence homology: Pig: 100%; Human: 100%; Bovine: 100%; Zebrafish: 90%; Rat: 86%; Mouse: 86%; Guinea pig: 79%



[View online »](#)

Product images:

Host: Rabbit; Target Name: C9orf116; Sample Tissue: Placenta lysates; Antibody Dilution: 1.0 ug/ml.