

Product datasheet for **TA334123**

SLC25A45 Rabbit Polyclonal Antibody

Product data:

Product Type:	Primary Antibodies
Applications:	IHC, WB
Recommended Dilution:	WB, IHC
Reactivity:	Human
Host:	Rabbit
Isotype:	IgG
Clonality:	Polyclonal
Immunogen:	The immunogen for Anti-SLC25A45 Antibody: synthetic peptide directed towards the C terminal of human LOC283130. Synthetic peptide located within the following region: GLRRRVYQGMIDCMVSSIRQEGLGVFFRGVTINSARAFPVNAVTFLSYEY
Formulation:	Liquid. Purified antibody supplied in 1x PBS buffer with 0.09% (w/v) sodium azide and 2% sucrose. <i>Note that this product is shipped as lyophilized powder to China customers.</i>
Purification:	Affinity Purified
Conjugation:	Unconjugated
Storage:	Store at -20°C as received.
Stability:	Stable for 12 months from date of receipt.
Predicted Protein Size:	27 kDa
Gene Name:	solute carrier family 25 member 45
Database Link:	NP_001070709 Entrez Gene 283130 Human Q8N413
Background:	The function remains unknown.
Synonyms:	AW491445; member 45; solute carrier family 25
Note:	Immunogen sequence homology: Human: 100%; Pig: 93%; Rat: 93%; Horse: 93%; Bovine: 93%; Guinea pig: 93%; Rabbit: 86%; Mouse: 85%
Protein Families:	Druggable Genome, Transmembrane

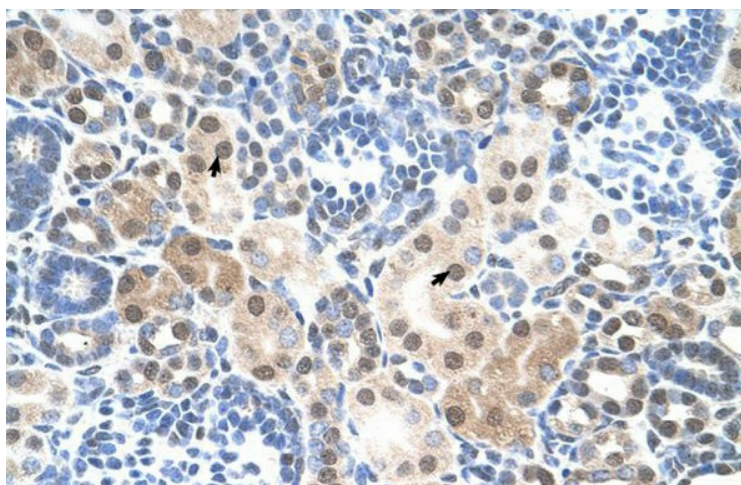


[View online »](#)

Product images:



WB Suggested Anti-SLC25A45 Antibody Titration:
5.0 ug/ml; Positive Control: HepG2 cell lysate



Human kidney