

Product datasheet for **TA334122**

SLC38A1 Rabbit Polyclonal Antibody

Product data:

Product Type:	Primary Antibodies
Applications:	IHC, WB
Recommended Dilution:	WB, IHC
Reactivity:	Human
Host:	Rabbit
Isotype:	IgG
Clonality:	Polyclonal
Immunogen:	The immunogen for Anti-SLC38A1 Antibody: synthetic peptide directed towards the middle region of human SLC38A1. Synthetic peptide located within the following region: DRSQKKMQMVSNISFFAMFVMYFLTAIFGYLTFYDQVSDLLHKYQSKDD
Formulation:	Liquid. Purified antibody supplied in 1x PBS buffer with 0.09% (w/v) sodium azide and 2% sucrose. <i>Note that this product is shipped as lyophilized powder to China customers.</i>
Purification:	Affinity Purified
Conjugation:	Unconjugated
Storage:	Store at -20°C as received.
Stability:	Stable for 12 months from date of receipt.
Predicted Protein Size:	54 kDa
Gene Name:	solute carrier family 38 member 1
Database Link:	NP_001070952 Entrez Gene 81539 Human Q9H2H9
Background:	Amino acid transporters play essential roles in the uptake of nutrients, production of energy, chemical metabolism, detoxification, and neurotransmitter cycling. SLC38A1 is an important transporter of glutamine, an intermediate in the detoxification of ammonia and the production of urea. Glutamine serves as a precursor for the synaptic transmitter, glutamate.
Synonyms:	ATA1; NAT2; SAT1; SNAT1



[View online »](#)

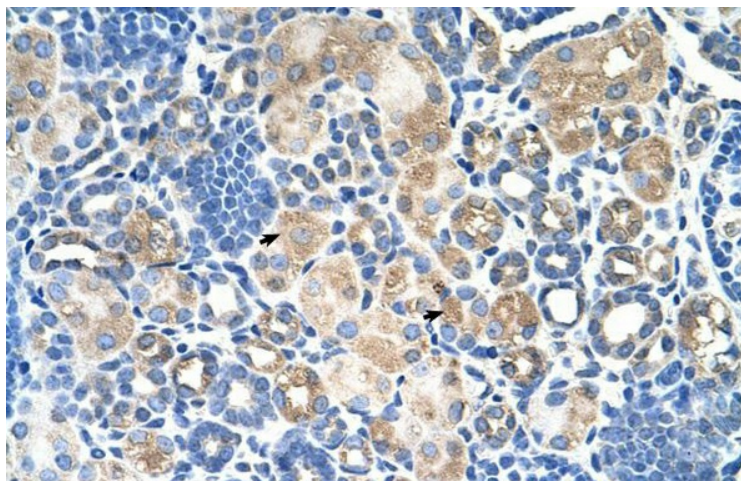
Note: Immunogen sequence homology: Human: 100%; Dog: 93%; Pig: 93%; Rat: 93%; Horse: 93%; Rabbit: 93%; Guinea pig: 93%; Bovine: 86%; Mouse: 85%

Protein Families: Transmembrane

Product images:



WB Suggested Anti-SLC38A1 Antibody Titration: 2.5 ug/ml; Positive Control: HepG2 cell lysate; SLC38A1 is supported by BioGPS gene expression data to be expressed in HepG2



Human kidney