

## Product datasheet for **TA334119**

### **C11orf94 Rabbit Polyclonal Antibody**

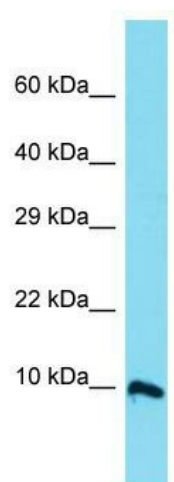
#### **Product data:**

Product Type:	Primary Antibodies
Applications:	WB
Recommended Dilution:	WB
Reactivity:	Human
Host:	Rabbit
Isotype:	IgG
Clonality:	Polyclonal
Immunogen:	The immunogen for Anti-C11orf94 Antibody is: synthetic peptide directed towards the middle region of Human C11orf94. Synthetic peptide located within the following region: LELSQPLSGLVDDYGILPKHPRGPRPLLSRAQQRKRDGPDLAEEYYDA
Formulation:	Liquid. Purified antibody supplied in 1x PBS buffer with 0.09% (w/v) sodium azide and 2% sucrose.
Purification:	Affinity Purified
Conjugation:	Unconjugated
Storage:	Store at -20°C as received.
Stability:	Stable for 12 months from date of receipt.
Predicted Protein Size:	10 kDa
Gene Name:	chromosome 11 open reading frame 94
Database Link:	<a href="#">NP_001073915</a> <a href="#">Entrez Gene 143678 Human</a> <a href="#">C9JXX5</a>
Background:	The function of this protein remains unknown.
Synonyms:	C11orf94
Note:	Immunogen sequence homology: Human: 100%; Dog: 93%; Pig: 93%; Bovine: 93%; Rabbit: 93%; Rat: 86%; Horse: 79%; Mouse: 79%



[View online »](#)

## Product images:



Host: Rabbit; Target Name: C11orf94; Sample  
Tissue: U937 Whole Cell lysates; Antibody  
Dilution: 1.0 ug/ml.