

Product datasheet for **TA334118**

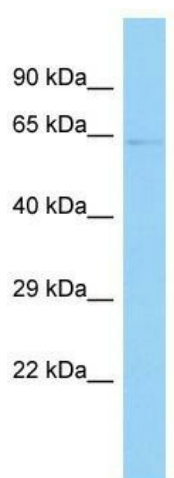
GPR108 Rabbit Polyclonal Antibody

Product data:

Product Type:	Primary Antibodies
Applications:	WB
Recommended Dilution:	WB
Reactivity:	Human
Host:	Rabbit
Isotype:	IgG
Clonality:	Polyclonal
Immunogen:	The immunogen for Anti-GPR108 Antibody is: synthetic peptide directed towards the N-terminal region of Human GPR108. Synthetic peptide located within the following region: KPKSTPAVIQGPSKDKDLVLGLSHLNNSYNFSFHVIGSQAEEGQYSLN
Formulation:	Liquid. Purified antibody supplied in 1x PBS buffer with 0.09% (w/v) sodium azide and 2% sucrose.
Purification:	Affinity Purified
Conjugation:	Unconjugated
Storage:	Store at -20°C as received.
Stability:	Stable for 12 months from date of receipt.
Predicted Protein Size:	59 kDa
Gene Name:	G protein-coupled receptor 108
Database Link:	NP_001073921 Entrez Gene 56927 Human Q9NPR9
Background:	The function of this protein remains unknown.
Synonyms:	LUSTR2
Note:	Immunogen sequence homology: Human: 100%; Rat: 92%; Mouse: 79%; Bovine: 79%
Protein Families:	Druggable Genome, Transmembrane



[View online »](#)

Product images:

Host: Rabbit; Target Name: GPR108; Sample
Tissue: HT1080 Whole Cell lysates; Antibody
Dilution: 1.0 ug/ml