

## Product datasheet for **TA334116**

### LIPK Rabbit Polyclonal Antibody

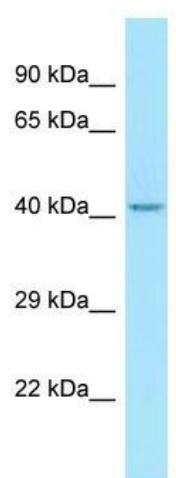
#### Product data:

Product Type:	Primary Antibodies
Applications:	WB
Recommended Dilution:	WB
Reactivity:	Human
Host:	Rabbit
Isotype:	IgG
Clonality:	Polyclonal
Immunogen:	The immunogen for Anti-LIPK Antibody is: synthetic peptide directed towards the N-terminal region of Human LIPK. Synthetic peptide located within the following region: LLGSMYGYDKKGNANPEANMNISQIISYWGYPYEEYDVTTKDGYILGIY
Formulation:	Liquid. Purified antibody supplied in 1x PBS buffer with 0.09% (w/v) sodium azide and 2% sucrose. <i>Note that this product is shipped as lyophilized powder to China customers.</i>
Purification:	Affinity Purified
Conjugation:	Unconjugated
Storage:	Store at -20°C as received.
Stability:	Stable for 12 months from date of receipt.
Predicted Protein Size:	45 kDa
Gene Name:	lipase family member K
Database Link:	<a href="#">NP_001073987</a> <a href="#">Entrez Gene 643414 Human</a> <a href="#">Q5VXJ0</a>
Background:	LIPK plays a highly specific role in the last step of keratinocyte differentiation. It may have an essential function in lipid metabolism of the most differentiated epidermal layers.
Synonyms:	bA186O14.2; LIPL2
Note:	Immunogen sequence homology: Human: 100%



[View online »](#)

## Product images:



WB Suggested Anti-LIPK Antibody; Titration: 1.0 ug/ml; Positive Control: HepG2 Whole Cell