

Product datasheet for **TA334115**

PPP1R1C Rabbit Polyclonal Antibody

Product data:

Product Type:	Primary Antibodies
Applications:	WB
Recommended Dilution:	WB
Reactivity:	Human
Host:	Rabbit
Isotype:	IgG
Clonality:	Polyclonal
Immunogen:	The immunogen for Anti-PPP1R1C Antibody is: synthetic peptide directed towards the C-terminal region of Human PPP1R1C. Synthetic peptide located within the following region: GELQNASPKQRKQSVYTPPTIKGVKHLKGQNESAFPEEEEGTNEREEQRD
Formulation:	Liquid. Purified antibody supplied in 1x PBS buffer with 0.09% (w/v) sodium azide and 2% sucrose. <i>Note that this product is shipped as lyophilized powder to China customers.</i>
Purification:	Affinity Purified
Conjugation:	Unconjugated
Storage:	Store at -20°C as received.
Stability:	Stable for 12 months from date of receipt.
Predicted Protein Size:	11 kDa
Gene Name:	protein phosphatase 1 regulatory inhibitor subunit 1C
Database Link:	NP_001074014 Entrez Gene 151242 Human Q8WWI7
Background:	Protein phosphatase-1 (PP1) is a major serine/threonine phosphatase that regulates a variety of cellular functions. PP1 consists of a catalytic subunit and regulatory subunits that determine the subcellular localization of PP1 or regulate its function. PPP1R1C belongs to a group of PP1 inhibitory subunits that are themselves regulated by phosphorylation.
Synonyms:	IPP5

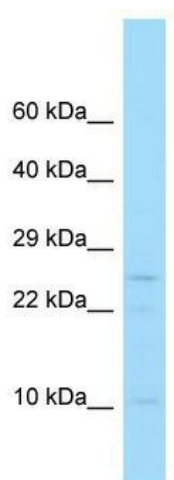


[View online »](#)

Note: Immunogen sequence homology: Dog: 100%; Rat: 100%; Human: 100%; Mouse: 100%; Pig: 93%; Rabbit: 93%; Guinea pig: 93%; Bovine: 85%

Protein Families: Druggable Genome, Phosphatase

Product images:



Host: Rabbit; Target Name: PPP1R1C; Sample Tissue: U937 Whole Cell lysates; Antibody Dilution: 1.0 ug/ml