

## Product datasheet for TA334114

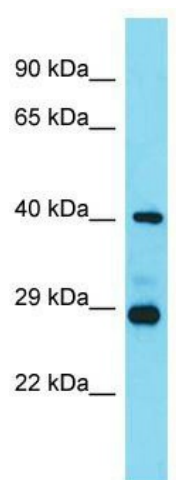
### Lhfpl3 Rabbit Polyclonal Antibody

#### Product data:

Product Type:	Primary Antibodies
Applications:	WB
Recommended Dilution:	WB
Reactivity:	Mouse
Host:	Rabbit
Isotype:	IgG
Clonality:	Polyclonal
Immunogen:	The immunogen for Anti-Lhfpl3 Antibody is: synthetic peptide directed towards the C-terminal region of Mouse Lhfpl3. Synthetic peptide located within the following region: TATVYKICAWMQLTSAACLVLGCMIFPDGWDSDEVKRMCGEKTDKYTLGA
Formulation:	Liquid. Purified antibody supplied in 1x PBS buffer with 0.09% (w/v) sodium azide and 2% sucrose.
Purification:	Affinity Purified
Conjugation:	Unconjugated
Storage:	Store at -20°C as received.
Stability:	Stable for 12 months from date of receipt.
Predicted Protein Size:	25 kDa
Gene Name:	lipoma HMGIC fusion partner-like 3
Database Link:	<a href="#">NP_001074700</a> <a href="#">Entrez Gene 269629 Mouse</a> <a href="#">Q9CTN8</a>
Background:	The function of this protein remains unknown.
Synonyms:	LHFPL4
Note:	Immunogen sequence homology: Dog: 100%; Pig: 100%; Horse: 100%; Human: 100%; Bovine: 100%; Guinea pig: 100%; Mouse: 93%; Zebrafish: 93%; Rat: 79%; Rabbit: 79%


[View online »](#)

## Product images:



Host: Rabbit; Target Name: Lhfpl3; Sample  
Tissue: Mouse Heart lysates; Antibody Dilution:  
1.0 ug/ml