

Product datasheet for **TA334113**

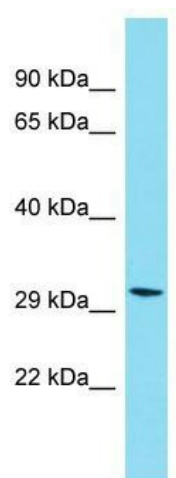
PIH1D2 Rabbit Polyclonal Antibody

Product data:

Product Type:	Primary Antibodies
Applications:	WB
Recommended Dilution:	WB
Reactivity:	Human
Host:	Rabbit
Isotype:	IgG
Clonality:	Polyclonal
Immunogen:	The immunogen for Anti-PIH1D2 Antibody is: synthetic peptide directed towards the N-terminal region of Human PIH1D2. Synthetic peptide located within the following region: SKGLLTQVTQFWNLLDDLAQSDPEGYEKFIQQQLKEGKQLCAAPEPQLCL
Formulation:	Liquid. Purified antibody supplied in 1x PBS buffer with 0.09% (w/v) sodium azide and 2% sucrose. <i>Note that this product is shipped as lyophilized powder to China customers.</i>
Purification:	Affinity Purified
Conjugation:	Unconjugated
Storage:	Store at -20°C as received.
Stability:	Stable for 12 months from date of receipt.
Predicted Protein Size:	32 kDa
Gene Name:	PIH1 domain containing 2
Database Link:	NP_001076088 Entrez Gene 120379 Human Q8WWB5
Background:	The function of this protein remains unknown.
Synonyms:	PIH1 domain containing 2
Note:	Immunogen sequence homology: Human: 100%; Dog: 79%; Pig: 79%; Horse: 79%; Rabbit: 79%



[View online »](#)

Product images:

Host: Rabbit; Target Name: PIH1D2; Sample
Tissue: Jurkat Whole Cell lysates; Antibody
Dilution: 1.0 ug/ml.