

Product datasheet for **TA334110**

Kdf1 Rabbit Polyclonal Antibody

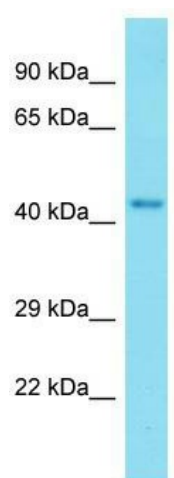
Product data:

Product Type:	Primary Antibodies
Applications:	WB
Recommended Dilution:	WB
Reactivity:	Mouse
Host:	Rabbit
Isotype:	IgG
Clonality:	Polyclonal
Immunogen:	The immunogen for Anti-1810019J16Rik Antibody is: synthetic peptide directed towards the middle region of Mouse 1810019J16Rik. Synthetic peptide located within the following region: IIRISTRKSRSRPQTSEGRSARSTAPAAAPDSGHETMLGSGLSQDELTVQ
Formulation:	Liquid. Purified antibody supplied in 1x PBS buffer with 0.09% (w/v) sodium azide and 2% sucrose. <i>Note that this product is shipped as lyophilized powder to China customers.</i>
Purification:	Affinity Purified
Conjugation:	Unconjugated
Storage:	Store at -20°C as received.
Stability:	Stable for 12 months from date of receipt.
Predicted Protein Size:	43 kDa
Gene Name:	keratinocyte differentiation factor 1
Database Link:	NP_001077385 Entrez Gene 69073 Mouse A2A9F4
Background:	The function of this protein remains unknown.
Note:	Immunogen sequence homology: Human: 100%; Dog: 93%; Pig: 93%; Rat: 93%; Mouse: 93%; Bovine: 93%; Rabbit: 93%; Guinea pig: 93%; Horse: 86%



[View online »](#)

Product images:



Host: Rabbit; Target Name: 1810019J16Rik;
Sample Tissue: Mouse Liver lysates; Antibody
Dilution: 1.0 ug/ml.