

## Product datasheet for **TA334109**

### CCDC173 Rabbit Polyclonal Antibody

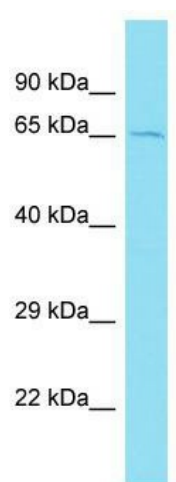
#### Product data:

Product Type:	Primary Antibodies
Applications:	WB
Recommended Dilution:	WB
Reactivity:	Human
Host:	Rabbit
Isotype:	IgG
Clonality:	Polyclonal
Immunogen:	The immunogen for Anti-CCDC173 Antibody is: synthetic peptide directed towards the C-terminal region of Human CCDC173. Synthetic peptide located within the following region: ADQIFWEHEKEKKCKADKEHQEVQDAHIQQMAKNKFNAKQAKQAELDYCR
Formulation:	Liquid. Purified antibody supplied in 1x PBS buffer with 0.09% (w/v) sodium azide and 2% sucrose.
Purification:	Affinity Purified
Conjugation:	Unconjugated
Storage:	Store at -20°C as received.
Stability:	Stable for 12 months from date of receipt.
Predicted Protein Size:	66 kDa
Gene Name:	coiled-coil domain containing 173
Database Link:	<a href="#">NP_001078916</a> <a href="#">Entrez Gene 129881 Human</a> <a href="#">Q0VFZ6</a>
Background:	The function of this protein remains unknown.
Synonyms:	C2orf77
Note:	Immunogen sequence homology: Human: 100%; Pig: 79%; Horse: 79%



[View online »](#)

## Product images:



Host: Rabbit; Target Name: CCDC173; Sample  
Tissue: MCF7 Whole Cell lysates; Antibody  
Dilution: 1.0 ug/ml.