

## Product datasheet for **TA334104**

### SLC39A6 Rabbit Polyclonal Antibody

#### Product data:

Product Type:	Primary Antibodies
Applications:	IHC, WB
Recommended Dilution:	WB, IHC
Reactivity:	Human
Host:	Rabbit
Isotype:	IgG
Clonality:	Polyclonal
Immunogen:	The immunogen for Anti-SLC39A6 Antibody: synthetic peptide directed towards the middle region of human SLC39A6. Synthetic peptide located within the following region: RSCLIHTSEKKAEIPPKTYSLQIAWVGGFIAISIISFLSLLGVILVPLMN
Formulation:	Liquid. Purified antibody supplied in 1x PBS buffer with 0.09% (w/v) sodium azide and 2% sucrose. <i>Note that this product is shipped as lyophilized powder to China customers.</i>
Purification:	Affinity Purified
Conjugation:	Unconjugated
Storage:	Store at -20°C as received.
Stability:	Stable for 12 months from date of receipt.
Predicted Protein Size:	48 kDa
Gene Name:	solute carrier family 39 member 6
Database Link:	<a href="#">NP_001092876</a> <a href="#">Entrez Gene 25800 Human</a> <a href="#">Q13433</a>
Background:	Zinc is an essential cofactor for hundreds of enzymes. It is involved in protein, nucleic acid, carbohydrate, and lipid metabolism, as well as in the control of gene transcription, growth, development, and differentiation. SLC39A6 belongs to a subfamily of proteins that show structural characteristics of zinc transporters.
Synonyms:	LIV-1; ZIP6



[View online »](#)

**Note:** Immunogen sequence homology: Dog: 100%; Rat: 100%; Horse: 100%; Human: 100%; Mouse: 100%; Sheep: 100%; Bovine: 100%; Rabbit: 100%; Pig: 93%; Guinea pig: 93%

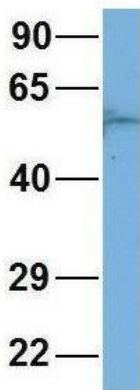
**Protein Families:** Druggable Genome, Transmembrane

**Product images:**



WB Suggested Anti-SLC39A6 Antibody Titration: 1.25 ug/ml; Positive Control: Jurkat cell lysate

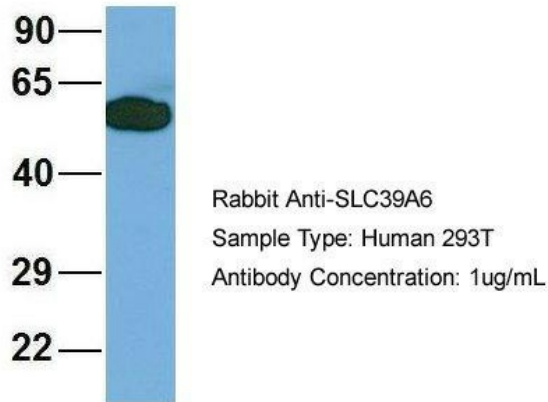
**SLC39A6**



Rabbit Anti-SLC39A6  
 Sample Type: Human Fetal Brain  
 Antibody Concentration: 1ug/mL

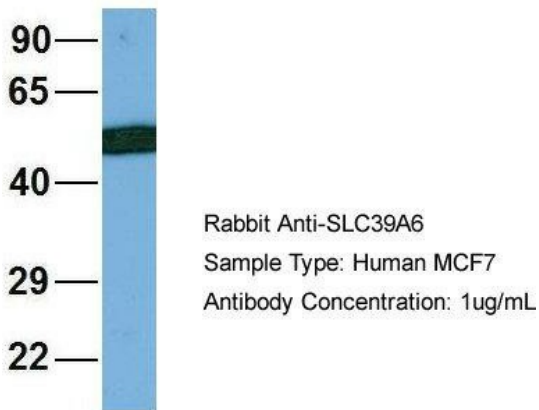
3Hum. Fetal Brain; Host: Rabbit; Target Name: NOP56; Sample Tissue: Human Fetal Brain; Antibody Dilution: 1.0 ug/ml

## SLC39A6



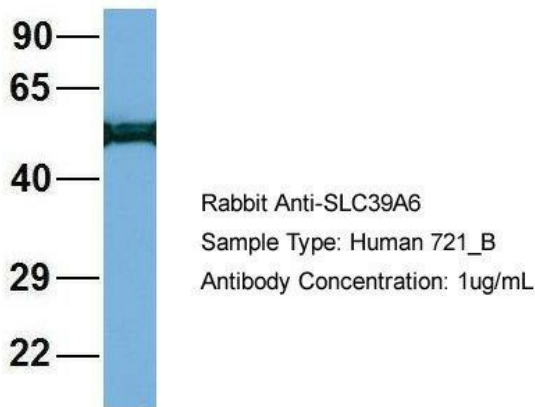
4Human 293T; Host: Rabbit; Target Name: HIRIP3; Sample Tissue: 293T; Antibody Dilution: 1.0 ug/ml; SLC39A6 is strongly supported by BioGPS gene expression data to be expressed in HEK293T

## SLC39A6

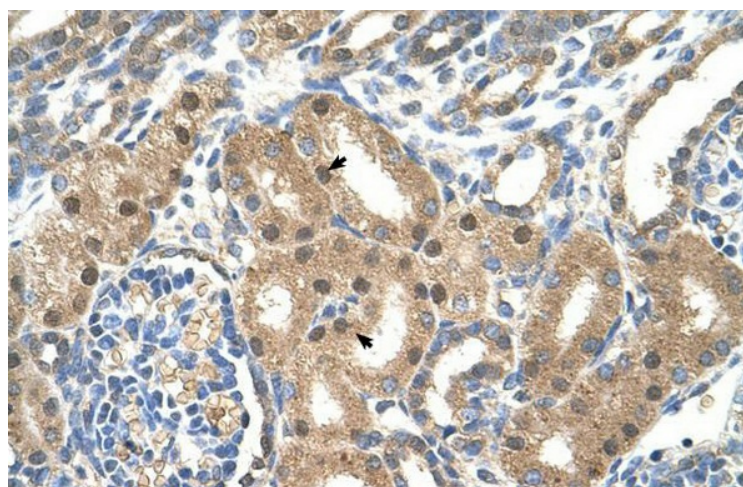


5Human MCF7; Host: Rabbit; Target Name: NOP56; Sample Tissue: MCF7; Antibody Dilution: 1.0 ug/ml; SLC39A6 is strongly supported by BioGPS gene expression data to be expressed in MCF7

## SLC39A6



6Human 721\_B; Host: Rabbit; Target Name: WT1; Sample Tissue: 721\_B; Antibody Dilution: 1.0 ug/ml; SLC39A6 is strongly supported by BioGPS gene expression data to be expressed in Human 721\_B cells



Human kidney