

## Product datasheet for **TA334103**

### EIF4E1B Rabbit Polyclonal Antibody

#### Product data:

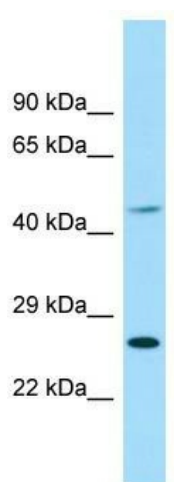
|                         |   |
|-------------------------|---|
| Product Type:           | Primary Antibodies  |
| Applications:           | WB  |
| Recommended Dilution:   | WB  |
| Reactivity:             | Human   |
| Host:                   | Rabbit  |
| Isotype:                | IgG   |
| Clonality:              | Polyclonal  |
| Immunogen:              | The immunogen for Anti-EIF4E1B Antibody is: synthetic peptide directed towards the middle region of Human EIF4E1B. Synthetic peptide located within the following region: CDYALFKDGIQPMWEDSRNKRGRWLVS LAKQQRHIELDRLWLETLCLI     |
| Formulation:            | Liquid. Purified antibody supplied in 1x PBS buffer with 0.09% (w/v) sodium azide and 2% sucrose.<br><i>Note that this product is shipped as lyophilized powder to China customers.</i>   |
| Purification:           | Affinity Purified   |
| Conjugation:            | Unconjugated  |
| Storage:                | Store at -20°C as received.   |
| Stability:              | Stable for 12 months from date of receipt.  |
| Predicted Protein Size: | 27 kDa  |
| Gene Name:              | eukaryotic translation initiation factor 4E family member 1B  |
| Database Link:          | <a href="#">NP_001092878</a><br><a href="#">Entrez Gene 253314 Human</a><br><a href="#">A6NMX2</a>  |
| Background:             | EIF4E1B recognizes and binds the 7-methylguanosine-containing mRNA cap during an early step in the initiation of protein synthesis and facilitates ribosome binding by inducing the unwinding of the mRNAs secondary structure. |
| Synonyms:               | FLJ36951  |
| Note:                   | Immunogen sequence homology: Dog: 100%; Pig: 100%; Horse: 100%; Human: 100%; Bovine: 100%; Guinea pig: 100%; Rat: 93%; Rabbit: 86%; Zebrafish: 85%; Mouse: 79%  |



[View online »](#)

Protein Pathways: Insulin signaling pathway, mTOR signaling pathway

### Product images:



WB Suggested Anti-EIF4E1B Antibody; Titration:  
1.0 ug/ml; Positive Control: NCI-H226 Whole Cell