

Product datasheet for **TA334102**

EIF4E1B Rabbit Polyclonal Antibody

Product data:

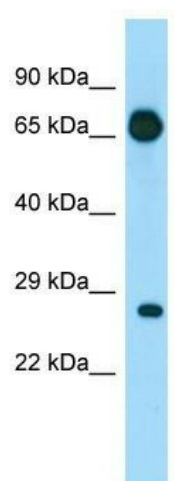
Product Type:	Primary Antibodies
Applications:	WB
Recommended Dilution:	WB
Reactivity:	Human
Host:	Rabbit
Isotype:	IgG
Clonality:	Polyclonal
Immunogen:	The immunogen for Anti-EIF4E1B Antibody is: synthetic peptide directed towards the N-terminal region of Human EIF4E1B. Synthetic peptide located within the following region: EKEEEAERTPTGKSPNSPRTLLSLRGKARTGGPMEVKLELHPLQNRWA
Formulation:	Liquid. Purified antibody supplied in 1x PBS buffer with 0.09% (w/v) sodium azide and 2% sucrose. <i>Note that this product is shipped as lyophilized powder to China customers.</i>
Purification:	Affinity Purified
Conjugation:	Unconjugated
Storage:	Store at -20°C as received.
Stability:	Stable for 12 months from date of receipt.
Predicted Protein Size:	27 kDa
Gene Name:	eukaryotic translation initiation factor 4E family member 1B
Database Link:	NP_001092878 Entrez Gene 253314 Human A6NMX2
Background:	EIF4E1B recognizes and binds the 7-methylguanosine-containing mRNA cap during an early step in the initiation of protein synthesis and facilitates ribosome binding by inducing the unwinding of the mRNAs secondary structure.
Synonyms:	FLJ36951
Note:	Immunogen sequence homology: Human: 100%



[View online »](#)

Protein Pathways: Insulin signaling pathway, mTOR signaling pathway

Product images:



WB Suggested Anti-EIF4E1B Antibody; Titration:
1.0 ug/ml; Positive Control: Fetal Heart