

## Product datasheet for **TA334101**

### CCDC64B (BICDL2) Rabbit Polyclonal Antibody

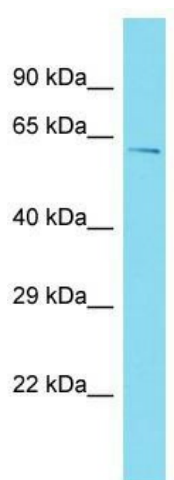
#### Product data:

Product Type:	Primary Antibodies
Applications:	WB
Recommended Dilution:	WB
Reactivity:	Human
Host:	Rabbit
Isotype:	IgG
Clonality:	Polyclonal
Immunogen:	The immunogen for Anti-CCDC64B Antibody is: synthetic peptide directed towards the N-terminal region of Human CCDC64B. Synthetic peptide located within the following region: EARAVELEGDVEALRAQLGEQRSEQQDSGRERARALSEQNLRLSQQL
Formulation:	Liquid. Purified antibody supplied in 1x PBS buffer with 0.09% (w/v) sodium azide and 2% sucrose.
Purification:	Affinity Purified
Conjugation:	Unconjugated
Storage:	Store at -20°C as received.
Stability:	Stable for 12 months from date of receipt.
Predicted Protein Size:	56 kDa
Gene Name:	BICD family like cargo adaptor 2
Database Link:	<a href="#">NP_001096645</a> <a href="#">Entrez Gene 146439 Human</a> <a href="#">A1A5D9</a>
Background:	The function of this protein remains unknown.
Synonyms:	BICDR-2
Note:	Immunogen sequence homology: Dog: 100%; Pig: 100%; Rat: 100%; Horse: 100%; Human: 100%; Bovine: 100%; Guinea pig: 100%; Mouse: 93%; Rabbit: 90%



[View online »](#)

## Product images:



Host: Rabbit; Target Name: CCDC64B; Sample Tissue: NCI-H226 Whole Cell lysates; Antibody Dilution: 1.0 ug/ml.