

Product datasheet for **TA334100**

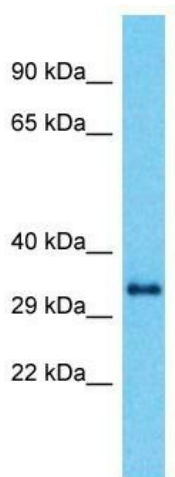
CCDC64B (BICDL2) Rabbit Polyclonal Antibody

Product data:

Product Type:	Primary Antibodies
Applications:	WB
Recommended Dilution:	WB
Reactivity:	Human
Host:	Rabbit
Isotype:	IgG
Clonality:	Polyclonal
Immunogen:	The immunogen for Anti-CCDC64B Antibody is: synthetic peptide directed towards the N-terminal region of Human CCDC64B. Synthetic peptide located within the following region: ELAHSDDGDQGQGADAPGDTPTTRSPKTRKASSPQSPPEEILEPPKKR
Formulation:	Liquid. Purified antibody supplied in 1x PBS buffer with 0.09% (w/v) sodium azide and 2% sucrose.
Purification:	Affinity Purified
Conjugation:	Unconjugated
Storage:	Store at -20°C as received.
Stability:	Stable for 12 months from date of receipt.
Predicted Protein Size:	33 kDa
Gene Name:	BICD family like cargo adaptor 2
Database Link:	NP_001096645 Entrez Gene 146439 Human A1A5D9
Background:	The function of this protein remains unknown.
Synonyms:	BICDR-2
Note:	Immunogen sequence homology: Human: 100%



[View online »](#)

Product images:

Host: Rabbit
Target Name: CCDC64B
Sample Tissue: ACHN Cell Lysate
Antibody Dilution: 1.0 µg/ml

Host: Rabbit; Target Name: CCDC64B; Sample
Tissue: ACHN Whole cell lysates; Antibody
Dilution: 1.0 ug/ml.