

## Product datasheet for **TA334098**

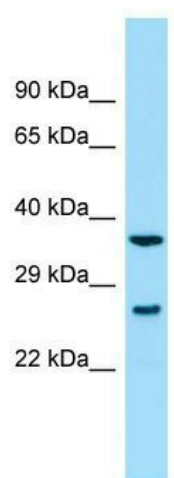
### SYCE2 Rabbit Polyclonal Antibody

#### Product data:

Product Type:	Primary Antibodies
Applications:	WB
Recommended Dilution:	WB
Reactivity:	Human
Host:	Rabbit
Isotype:	IgG
Clonality:	Polyclonal
Immunogen:	The immunogen for Anti-SYCE2 Antibody is: synthetic peptide directed towards the C-terminal region of Human SYCE2. Synthetic peptide located within the following region: LKQVCHSVETVYKDLCLQPEQSLRLRWGPDHSRGKSPPRPGNSQPPDVFV
Formulation:	Liquid. Purified antibody supplied in 1x PBS buffer with 0.09% (w/v) sodium azide and 2% sucrose. <i>Note that this product is shipped as lyophilized powder to China customers.</i>
Purification:	Affinity Purified
Conjugation:	Unconjugated
Storage:	Store at -20°C as received.
Stability:	Stable for 12 months from date of receipt.
Predicted Protein Size:	23 kDa
Gene Name:	synaptonemal complex central element protein 2
Database Link:	<a href="#">NP_001099048</a> <a href="#">Entrez Gene 256126 Human</a> <a href="#">Q6PIF2</a>
Background:	SYCE2 is a major component of the transverse central element of synaptonemal complexes (SCS), formed between homologous chromosomes during meiotic prophase. SYCE2 requires SYCP1 in order to be incorporated into the central element and may have a role in the synaptonemal complex assembly, stabilization and recombination.
Synonyms:	CESC1
Note:	Immunogen sequence homology: Human: 100%



[View online »](#)

**Product images:**

WB Suggested Anti-SYCE2 Antibody; Titration: 1.0 ug/ml; Positive Control: Fetal kidney