

Product datasheet for **TA334096**

ACYP1 Rabbit Polyclonal Antibody

Product data:

Product Type:	Primary Antibodies
Applications:	WB
Recommended Dilution:	WB
Reactivity:	Human
Host:	Rabbit
Isotype:	IgG
Clonality:	Polyclonal
Immunogen:	The immunogen for Anti-ACYP1 Antibody is: synthetic peptide directed towards the middle region of Human ACYP1. Synthetic peptide located within the following region: LVGWVQNTDRGTVQGQLQGPISKVRHMQEWLETRGSPKSHIDKANFNNEK
Formulation:	Liquid. Purified antibody supplied in 1x PBS buffer with 0.09% (w/v) sodium azide and 2% sucrose. <i>Note that this product is shipped as lyophilized powder to China customers.</i>
Purification:	Affinity Purified
Conjugation:	Unconjugated
Storage:	Store at -20°C as received.
Stability:	Stable for 12 months from date of receipt.
Predicted Protein Size:	11 kDa
Gene Name:	acylphosphatase 1
Database Link:	NP_001098 Entrez Gene 97 Human P07311
Background:	Acylphosphatase is a small cytosolic enzyme that catalyzes the hydrolysis of the carboxyl-phosphate bond of acylphosphates. Two isoenzymes have been isolated, called muscle acylphosphatase and erythrocyte acylphosphatase, on the basis of their tissue localization. This gene encodes the erythrocyte acylphosphatase isoenzyme. Alternatively spliced transcript variants that encode different proteins were identified through data analysis.
Synonyms:	ACYPE

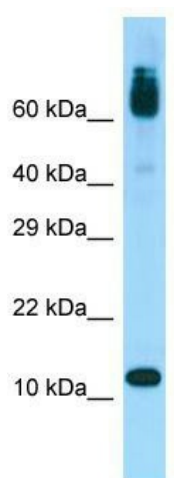


[View online »](#)

Note: Immunogen sequence homology: Pig: 100%; Human: 100%; Mouse: 100%; Rabbit: 100%; Dog: 92%; Rat: 92%; Horse: 92%; Bovine: 92%; Guinea pig: 85%

Protein Pathways: Pyruvate metabolism

Product images:



WB Suggested Anti-ACYP1 Antibody; Titration: 1.0 ug/ml; Positive Control: Fetal Heart