

Product datasheet for **TA334093**

Aamdc Rabbit Polyclonal Antibody

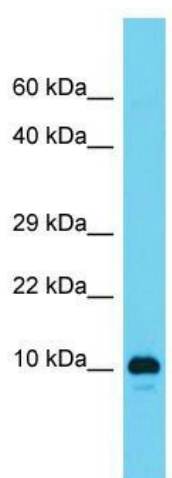
Product data:

Product Type:	Primary Antibodies
Applications:	WB
Recommended Dilution:	WB
Reactivity:	Rat
Host:	Rabbit
Isotype:	IgG
Clonality:	Polyclonal
Immunogen:	The immunogen for Anti-Aamdc Antibody is: synthetic peptide directed towards the N-terminal region of Rat Aamdc. Synthetic peptide located within the following region: IASLSWGQMKVQGSTLTYKDCKVWPGGSRAWDWRETGTEHSPGVQPADVK
Formulation:	Liquid. Purified antibody supplied in 1x PBS buffer with 0.09% (w/v) sodium azide and 2% sucrose. <i>Note that this product is shipped as lyophilized powder to China customers.</i>
Purification:	Affinity Purified
Conjugation:	Unconjugated
Storage:	Store at -20°C as received.
Stability:	Stable for 12 months from date of receipt.
Predicted Protein Size:	13 kDa
Gene Name:	adipogenesis associated, Mth938 domain containing
Database Link:	NP_001101963 Entrez Gene 361606 Rat
Background:	The function of this protein remains unknown.
Synonyms:	1810020D17Rik; 1810037D19Rik; LI2; RGD1561459
Note:	Immunogen sequence homology: Dog: 100%; Pig: 100%; Rat: 100%; Horse: 100%; Human: 100%; Mouse: 100%; Bovine: 100%; Rabbit: 100%; Guinea pig: 100%; Zebrafish: 85%



[View online »](#)

Product images:



Host: Rabbit; Target Name: RGD1561459; Sample Tissue: Rat Testis lysates; Antibody Dilution: 1.0 ug/ml