

Product datasheet for **TA334090**

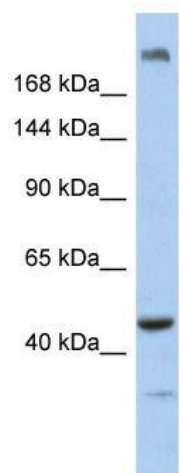
KIAA0284 (CEP170B) Rabbit Polyclonal Antibody

Product data:

Product Type:	Primary Antibodies
Applications:	WB
Recommended Dilution:	WB
Reactivity:	Human
Host:	Rabbit
Isotype:	IgG
Clonality:	Polyclonal
Immunogen:	The immunogen for Anti-CEP170B Antibody: synthetic peptide directed towards the n terminal of human KIAA0284. Synthetic peptide located within the following region: QLTKARKQEEDDSLSDAGTYTIETEAQDTEVEEARKMIDQVFGVLESPEL
Formulation:	Liquid. Purified antibody supplied in 1x PBS buffer with 0.09% (w/v) sodium azide and 2% sucrose.
Purification:	Affinity Purified
Conjugation:	Unconjugated
Storage:	Store at -20°C as received.
Stability:	Stable for 12 months from date of receipt.
Predicted Protein Size:	171 kDa
Gene Name:	centrosomal protein 170B
Database Link:	NP_001106197 Entrez Gene 283638 Human Q9Y4F5
Background:	The specific function of the protein remains unknown.
Synonyms:	CEP170R; FAM68C; KIAA0284
Note:	Immunogen sequence homology: Pig: 100%; Horse: 100%; Human: 100%; Mouse: 100%; Bovine: 100%; Dog: 93%; Rat: 93%; Zebrafish: 92%; Guinea pig: 92%



[View online »](#)

Product images:

WB Suggested Anti-KIAA0284 Antibody Titration:
0.2-1 ug/ml; ELISA Titer: 1: 312500; Positive
Control: Human Muscle