

Product datasheet for **TA334089**

NCX1 (SLC8A1) Rabbit Polyclonal Antibody

Product data:

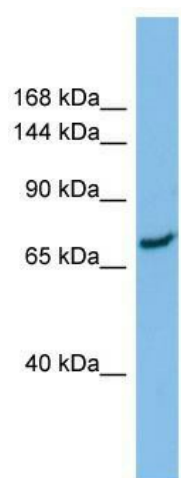
Product Type:	Primary Antibodies
Applications:	WB
Recommended Dilution:	WB
Reactivity:	Human
Host:	Rabbit
Isotype:	IgG
Clonality:	Polyclonal
Immunogen:	The immunogen for Anti-SLC8A1 Antibody is: synthetic peptide directed towards the N-terminal region of Human SLC8A1. Synthetic peptide located within the following region: CTGSYYCKKGVILPIWEPQDPSFGDKIARATVYFVAMVYMFLGVSIIADR
Formulation:	Liquid. Purified antibody supplied in 1x PBS buffer with 0.09% (w/v) sodium azide and 2% sucrose. <i>Note that this product is shipped as lyophilized powder to China customers.</i>
Purification:	Affinity Purified
Conjugation:	Unconjugated
Storage:	Store at -20°C as received.
Stability:	Stable for 12 months from date of receipt.
Predicted Protein Size:	73 kDa
Gene Name:	solute carrier family 8 member A1
Database Link:	NP_001106271 Entrez Gene 6546 Human P32418
Background:	The function of this protein remains unknown.
Synonyms:	NCX1
Note:	Immunogen sequence homology: Dog: 100%; Pig: 100%; Rat: 100%; Horse: 100%; Human: 100%; Mouse: 100%; Bovine: 100%; Rabbit: 100%; Guinea pig: 100%; Zebrafish: 83%
Protein Families:	Transmembrane



[View online »](#)

Protein Pathways: Arrhythmogenic right ventricular cardiomyopathy (ARVC), Calcium signaling pathway, Cardiac muscle contraction, Dilated cardiomyopathy, Hypertrophic cardiomyopathy (HCM)

Product images:



Host: Rabbit; Target Name: SLC8A1; Sample Tissue: ACHN Whole Cell lysates; Antibody Dilution: 1.0 ug/ml