

Product datasheet for **TA334087**

C9orf57 Rabbit Polyclonal Antibody

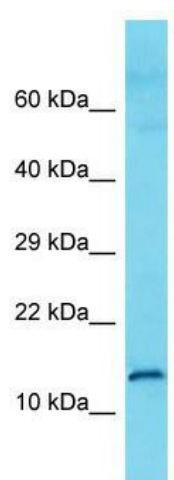
Product data:

Product Type:	Primary Antibodies
Applications:	WB
Recommended Dilution:	WB
Reactivity:	Human
Host:	Rabbit
Isotype:	IgG
Clonality:	Polyclonal
Immunogen:	The immunogen for Anti-C9orf57 Antibody is: synthetic peptide directed towards the N-terminal region of Human C9orf57. Synthetic peptide located within the following region: GLEIRMRRIVFAGVILFRLLGVILFRLLGVILFGRLGDLGTCQTKPGQYW
Formulation:	Liquid. Purified antibody supplied in 1x PBS buffer with 0.09% (w/v) sodium azide and 2% sucrose.
Purification:	Affinity Purified
Conjugation:	Unconjugated
Storage:	Store at -20°C as received.
Stability:	Stable for 12 months from date of receipt.
Predicted Protein Size:	17 kDa
Gene Name:	chromosome 9 open reading frame 57
Database Link:	NP_001122090 Entrez Gene 138240 Human Q5W0N0
Background:	The function of this protein remains unknown.
Synonyms:	RP11-346E17.3
Note:	Immunogen sequence homology: Human: 100%; Mouse: 83%; Rabbit: 83%



[View online »](#)

Product images:



Host: Rabbit; Target Name: C9orf57; Sample
Tissue: Fetal Kidney lysates; Antibody Dilution: 1.0
ug/ml.