

Product datasheet for **TA334085**

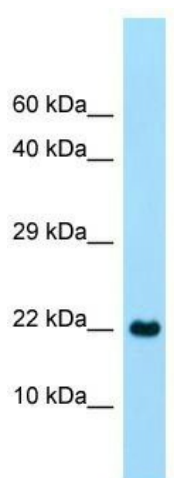
CLEC2A Rabbit Polyclonal Antibody

Product data:

Product Type:	Primary Antibodies
Applications:	WB
Recommended Dilution:	WB
Reactivity:	Human
Host:	Rabbit
Isotype:	IgG
Clonality:	Polyclonal
Immunogen:	The immunogen for Anti-CLEC2A Antibody is: synthetic peptide directed towards the C-terminal region of Human CLEC2A. Synthetic peptide located within the following region: HWIGLSRKQGDSWKWTNGTTFNGWFEIINGSGFAFLSADGVHSSRGFIDI
Formulation:	Liquid. Purified antibody supplied in 1x PBS buffer with 0.09% (w/v) sodium azide and 2% sucrose.
Purification:	Affinity Purified
Conjugation:	Unconjugated
Storage:	Store at -20°C as received.
Stability:	Stable for 12 months from date of receipt.
Predicted Protein Size:	19 kDa
Gene Name:	C-type lectin domain family 2 member A
Database Link:	NP_001124183 Entrez Gene 387836 Human Q6UWW9
Background:	CLEC2A belongs to the CLEC2 family of activation-induced, natural killer gene complex-encoded C-type lectin-like receptors.
Synonyms:	INPE5792; KACL; PILAR; UNQ5792
Note:	Immunogen sequence homology: Human: 100%; Bovine: 86%



[View online »](#)

Product images:

WB Suggested Anti-CLEC2A Antibody; Titration:
1.0 ug/ml; Positive Control: Fetal Heart