

## Product datasheet for **TA334084**

### SLC6A6 Rabbit Polyclonal Antibody

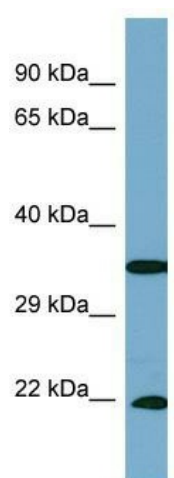
#### Product data:

Product Type:	Primary Antibodies
Applications:	WB
Recommended Dilution:	WB
Reactivity:	Human
Host:	Rabbit
Isotype:	IgG
Clonality:	Polyclonal
Immunogen:	The immunogen for Anti-SLC6A6 Antibody is: synthetic peptide directed towards the C-terminal region of Human SLC6A6. Synthetic peptide located within the following region: EFWERNVLSLSPGIDHPGSLKWDLALCLLLVWLVCFCIWKGVRSTGKVV
Formulation:	Liquid. Purified antibody supplied in 1x PBS buffer with 0.09% (w/v) sodium azide and 2% sucrose.
Purification:	Affinity Purified
Conjugation:	Unconjugated
Storage:	Store at -20°C as received.
Stability:	Stable for 12 months from date of receipt.
Predicted Protein Size:	39 kDa
Gene Name:	solute carrier family 6 member 6
Database Link:	<a href="#">NP_001127839</a> <a href="#">Entrez Gene 6533 Human</a> <a href="#">P31641</a>
Background:	The function of this protein remains unknown.
Synonyms:	TAUT
Note:	Immunogen sequence homology: Pig: 100%; Rat: 100%; Human: 100%; Guinea pig: 100%; Rabbit: 92%; Dog: 86%; Horse: 86%; Mouse: 86%
Protein Families:	Druggable Genome, Transmembrane



[View online »](#)

## Product images:



Host: Rabbit; Target Name: SLC6A6; Sample  
Tissue: PANC1 Whole cell lysates; Antibody  
Dilution: 1.0 ug/ml