

Product datasheet for **TA334081**

SIRPB2 Rabbit Polyclonal Antibody

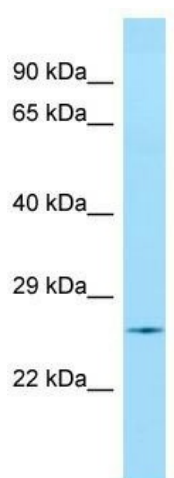
Product data:

Product Type:	Primary Antibodies
Applications:	WB
Recommended Dilution:	WB
Reactivity:	Human
Host:	Rabbit
Isotype:	IgG
Clonality:	Polyclonal
Immunogen:	The immunogen for Anti-SIRPB2 Antibody is: synthetic peptide directed towards the middle region of Human SIRPB2. Synthetic peptide located within the following region: GGISHPKETAVQASNDFSILLQNVSSDAGTYVCVKFQRKPNRQYLSGQ
Formulation:	Liquid. Purified antibody supplied in 1x PBS buffer with 0.09% (w/v) sodium azide and 2% sucrose.
Purification:	Affinity Purified
Conjugation:	Unconjugated
Storage:	Store at -20°C as received.
Stability:	Stable for 12 months from date of receipt.
Predicted Protein Size:	26 kDa
Gene Name:	signal regulatory protein beta 2
Database Link:	NP_001128308 Entrez Gene 284759 Human Q5JXA9
Background:	The function of this protein remains unknown.
Synonyms:	dj776F14.2; PTPN1L; PTPNS1L3
Note:	Immunogen sequence homology: Human: 100%; Rabbit: 100%; Pig: 93%; Horse: 93%; Dog: 86%; Rat: 86%; Bovine: 86%
Protein Families:	Transmembrane



[View online »](#)

Product images:



WB Suggested Anti-SIRPB2 Antibody; Titration:
1.0 ug/ml; Positive Control: Fetal Heart