

Product datasheet for **TA334080**

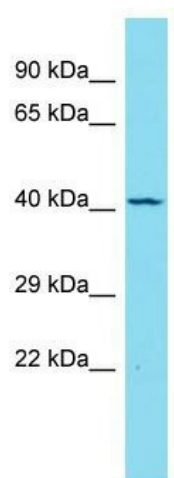
TPRA1 Rabbit Polyclonal Antibody

Product data:

Product Type:	Primary Antibodies
Applications:	WB
Recommended Dilution:	WB
Reactivity:	Human
Host:	Rabbit
Isotype:	IgG
Clonality:	Polyclonal
Immunogen:	The immunogen for Anti-TPRA1 Antibody is: synthetic peptide directed towards the C-terminal region of Human TPRA1. Synthetic peptide located within the following region: SFFAPLIYVAFLRGFFGSEPKILFSYKQCQVDETEEPDVHLPQPYAVARRE
Formulation:	Liquid. Purified antibody supplied in 1x PBS buffer with 0.09% (w/v) sodium azide and 2% sucrose. <i>Note that this product is shipped as lyophilized powder to China customers.</i>
Purification:	Affinity Purified
Conjugation:	Unconjugated
Storage:	Store at -20°C as received.
Stability:	Stable for 12 months from date of receipt.
Predicted Protein Size:	40 kDa
Gene Name:	transmembrane protein adipocyte associated 1
Database Link:	NP_001129525 Entrez Gene 131601 Human Q86W33
Background:	The function of this protein remains unknown.
Synonyms:	GPR175; TMEM227; TPRA40
Note:	Immunogen sequence homology: Human: 100%; Rabbit: 100%; Dog: 93%; Horse: 93%; Bovine: 93%; Pig: 86%; Rat: 86%; Mouse: 86%; Guinea pig: 86%
Protein Families:	Druggable Genome, Transmembrane



[View online »](#)

Product images:

Host: Rabbit; Target Name: TPRA1; Sample Tissue: HCT15 Whole Cell lysates; Antibody Dilution: 1.0 ug/ml. TPRA1 is supported by BioGPS gene expression data to be expressed in HCT15