

Product datasheet for **TA334079**

ZFP161 (ZBTB14) Rabbit Polyclonal Antibody

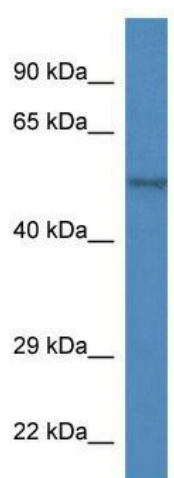
Product data:

Product Type:	Primary Antibodies
Applications:	WB
Recommended Dilution:	WB
Reactivity:	Mouse
Host:	Rabbit
Isotype:	IgG
Clonality:	Polyclonal
Immunogen:	The immunogen for Anti-Zbtb14 Antibody: synthetic peptide corresponding to a region of Mouse. Synthetic peptide located within the following region: DDDVEEIGDQDDSPSDDTVEGTPPSQEDGKSPTTTLRVQEAILKELGSEE
Formulation:	Liquid. Purified antibody supplied in 1x PBS buffer with 0.09% (w/v) sodium azide and 2% sucrose.
Purification:	Affinity Purified
Conjugation:	Unconjugated
Storage:	Store at -20°C as received.
Stability:	Stable for 12 months from date of receipt.
Predicted Protein Size:	51 kDa
Gene Name:	zinc finger and BTB domain containing 14
Database Link:	NP_001137295 Entrez Gene 22666 Mouse O43829
Background:	Zfp161 is a transcriptional repressor of MYC and thymidine kinase promoters.
Synonyms:	ZF5; ZFP-5; ZFP-161; ZFP161; ZNF478
Note:	Immunogen sequence homology: Dog: 100%; Pig: 100%; Rat: 100%; Horse: 100%; Human: 100%; Mouse: 100%; Bovine: 100%; Rabbit: 100%
Protein Families:	Transcription Factors



[View online »](#)

Product images:



WB Suggested Anti-Zfp161 Antibody; Titration:
1.0 ug/ml; Positive Control: Mouse Heart