

## Product datasheet for **TA334078**

### Plcb1 Rabbit Polyclonal Antibody

#### Product data:

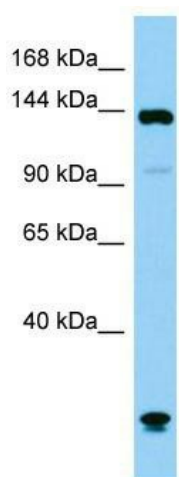
Product Type:	Primary Antibodies
Applications:	WB
Recommended Dilution:	WB
Reactivity:	Mouse
Host:	Rabbit
Isotype:	IgG
Clonality:	Polyclonal
Immunogen:	The immunogen for Anti-Plcb1 Antibody is: synthetic peptide directed towards the C-terminal region of Mouse Plcb1. Synthetic peptide located within the following region: AALDAEMTQKLIDLKDKQQQLLNLRQEQYYSEKYQKREHIKLLIQKLTLD
Formulation:	Liquid. Purified antibody supplied in 1x PBS buffer with 0.09% (w/v) sodium azide and 2% sucrose. <i>Note that this product is shipped as lyophilized powder to China customers.</i>
Purification:	Affinity Purified
Conjugation:	Unconjugated
Storage:	Store at -20°C as received.
Stability:	Stable for 12 months from date of receipt.
Predicted Protein Size:	133 kDa
Gene Name:	phospholipase C, beta 1
Database Link:	<a href="#">NP_001139302</a> <a href="#">Entrez Gene 18795 Mouse Q9Z1B3</a>
Background:	The production of the second messenger molecules diacylglycerol (DAG) and inositol 1,4,5-trisphosphate (IP3) is mediated by activated phosphatidylinositol-specific phospholipase C enzymes.
Synonyms:	1-phosphatidyl-D-myo-inositol-4,5-bisphosphate; FLJ45792; inositoltrisphosphohydrolase; KIAA0581; OTTHUMP00000030239; PI-PLC; PLC-154; PLC-beta-1; PLC-I; PLC154



[View online »](#)

**Note:** Immunogen sequence homology: Dog: 100%; Pig: 100%; Rat: 100%; Horse: 100%; Human: 100%; Mouse: 100%; Bovine: 100%; Rabbit: 100%; Guinea pig: 100%; Zebrafish: 86%

**Product images:**



Host: Rabbit; Target Name: Plcb1; Sample Tissue: Mouse Testis lysates; Antibody Dilution: 1.0 ug/ml