

Product datasheet for **TA334077**

SLC25A4 Rabbit Polyclonal Antibody

Product data:

Product Type:	Primary Antibodies
Applications:	IHC, WB
Recommended Dilution:	WB
Reactivity:	Human, Rat
Host:	Rabbit
Isotype:	IgG
Clonality:	Polyclonal
Immunogen:	The immunogen for Anti-SLC25A4 Antibody: synthetic peptide directed towards the N terminal of human SLC25A4. Synthetic peptide located within the following region: LLQVQHASKQISAQKQYKGIIDCVWRIPKEQGFLSFWRGNLANVIRYFPT
Formulation:	Liquid. Purified antibody supplied in 1x PBS buffer with 0.09% (w/v) sodium azide and 2% sucrose. <i>Note that this product is shipped as lyophilized powder to China customers.</i>
Purification:	Affinity Purified
Conjugation:	Unconjugated
Storage:	Store at -20°C as received.
Stability:	Stable for 12 months from date of receipt.
Predicted Protein Size:	33 kDa
Gene Name:	solute carrier family 25 member 4
Database Link:	NP_001142 Entrez Gene 85333 Rat Entrez Gene 291 Human P12235
Background:	This gene is a member of the mitochondrial carrier subfamily of solute carrier protein genes. The product of this gene functions as a gated pore that translocates ADP from the mitochondrial matrix into the cytoplasm. The protein forms a homodimer embedded in the inner mitochondria membrane. Mutations in this gene have been shown to result in autosomal dominant progressive external ophthalmoplegia and familial hypertrophic cardiomyopathy.



[View online »](#)

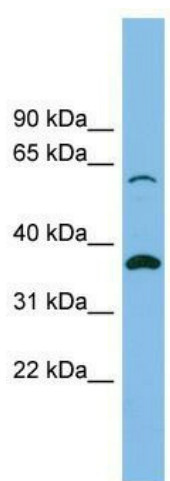
Synonyms: 1; AAC1; ANT; ANT 1; ANT1; MTDPS12; PEO2; PEO3; T1

Note: Immunogen sequence homology: Dog: 100%; Pig: 100%; Rat: 100%; Goat: 100%; Human: 100%; Mouse: 100%; Sheep: 100%; Bovine: 100%; Rabbit: 100%; Guinea pig: 100%; Horse: 93%; Zebrafish: 86%

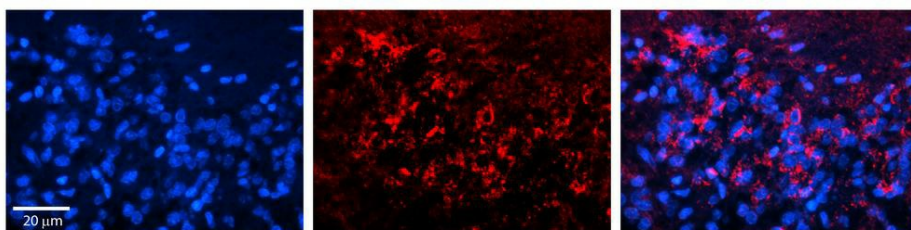
Protein Families: Druggable Genome, Transmembrane

Protein Pathways: Calcium signaling pathway, Huntington's disease, Parkinson's disease

Product images:



WB Suggested Anti-SLC25A4 Antibody Titration: 0.2-1 ug/ml; ELISA Titer: 1:312500; Positive Control: RPMI 8226 cell lysate; SLC25A4 is supported by BioGPS gene expression data to be expressed in RPMI 8226



Rabbit Anti-SLC25A4 Antibody; Formalin Fixed Paraffin Embedded Tissue: Human Pineal Tissue; Observed Staining: Cytoplasmic in cell bodies of pinealocytes and their processes; Primary Antibody Concentration: 1:100; Other Working Concentrations: 1/600; Seco