

Product datasheet for **TA334076**

SLC25A13 Rabbit Polyclonal Antibody

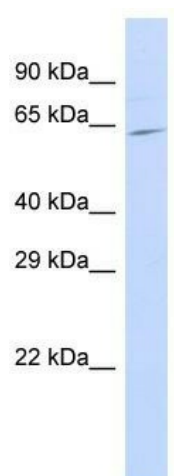
Product data:

Product Type:	Primary Antibodies
Applications:	WB
Recommended Dilution:	WB
Reactivity:	Human
Host:	Rabbit
Isotype:	IgG
Clonality:	Polyclonal
Immunogen:	The immunogen for Anti-SLC25A13 Antibody is: synthetic peptide directed towards the C-terminal region of Human SLC25A13. Synthetic peptide located within the following region: RINLPAPNPDHVGGYKLAVATFAGIENKFGLYLPLFKPSVSTSKAIGGGP
Formulation:	Liquid. Purified antibody supplied in 1x PBS buffer with 0.09% (w/v) sodium azide and 2% sucrose. <i>Note that this product is shipped as lyophilized powder to China customers.</i>
Purification:	Affinity Purified
Conjugation:	Unconjugated
Storage:	Store at -20°C as received.
Stability:	Stable for 12 months from date of receipt.
Predicted Protein Size:	62 kDa
Gene Name:	solute carrier family 25 member 13
Database Link:	NP_001153682 Entrez Gene 10165 Human Q9UJS0
Background:	The function of this protein remains unknown.
Synonyms:	ARALAR2; CITRIN; CTLN2
Note:	Immunogen sequence homology: Dog: 100%; Pig: 100%; Rat: 100%; Horse: 100%; Human: 100%; Mouse: 100%; Bovine: 100%; Rabbit: 100%; Guinea pig: 100%; Zebrafish: 79%
Protein Families:	Druggable Genome



[View online »](#)

Product images:



Host: Rabbit; Target Name: SLC25A13; Sample
Tissue: 721_B Whole Cell lysates; Antibody
Dilution: 1.0 ug/ml