

Product datasheet for **TA334074**

Spag7 Rabbit Polyclonal Antibody

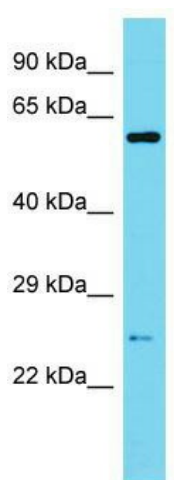
Product data:

Product Type:	Primary Antibodies
Applications:	WB
Recommended Dilution:	WB
Reactivity:	Mouse
Host:	Rabbit
Isotype:	IgG
Clonality:	Polyclonal
Immunogen:	The immunogen for Anti-Spag7 Antibody is: synthetic peptide directed towards the N-terminal region of Mouse Spag7. Synthetic peptide located within the following region: MADLLGSILSSMEKPPSLGDQESRRKAREQAARLKKLQEQDKQQKVEFRK
Formulation:	Liquid. Purified antibody supplied in 1x PBS buffer with 0.09% (w/v) sodium azide and 2% sucrose.
Purification:	Affinity Purified
Conjugation:	Unconjugated
Storage:	Store at -20°C as received.
Stability:	Stable for 12 months from date of receipt.
Predicted Protein Size:	23 kDa
Gene Name:	sperm associated antigen 7
Database Link:	NP_001161141 Entrez Gene 216873 Mouse Q7TNE3
Background:	The function of this protein remains unknown.
Synonyms:	ACRP; FSA-1; MGC20134
Note:	Immunogen sequence homology: Pig: 100%; Rat: 100%; Horse: 100%; Human: 100%; Bovine: 100%; Rabbit: 100%; Guinea pig: 100%; Mouse: 93%; Dog: 92%; Zebrafish: 92%



[View online »](#)

Product images:



Host: Rabbit; Target Name: Spag7; Sample
Tissue: Mouse Spleen lysates; Antibody Dilution:
1.0 ug/ml