

Product datasheet for **TA334073**

BEAN1 Rabbit Polyclonal Antibody

Product data:

Product Type:	Primary Antibodies
Applications:	WB
Recommended Dilution:	WB
Reactivity:	Human
Host:	Rabbit
Isotype:	IgG
Clonality:	Polyclonal
Immunogen:	The immunogen for Anti-BEAN1 Antibody is: synthetic peptide directed towards the C-terminal region of Human BEAN1. Synthetic peptide located within the following region: TDAPPPYSLTDSCTLDGTSDSGSGHSPGRHQEQRTPAQGGLHTVSMdT
Formulation:	Liquid. Purified antibody supplied in 1x PBS buffer with 0.09% (w/v) sodium azide and 2% sucrose. <i>Note that this product is shipped as lyophilized powder to China customers.</i>
Purification:	Affinity Purified
Conjugation:	Unconjugated
Storage:	Store at -20°C as received.
Stability:	Stable for 12 months from date of receipt.
Predicted Protein Size:	28 kDa
Gene Name:	brain expressed, associated with NEDD4, 1
Database Link:	NP_001171491 Entrez Gene 146227 Human Q3B7T3



[View online »](#)

Background:

The protein encoded by this gene is one of several proteins that interact with NEDD4, a member of a family of ubiquitin-protein ligases. These proteins have PY motifs in common that bind to the WW domains of NEDD4. NEDD4 is developmentally regulated, and is highly expressed in embryonic tissues. Mutations in this gene (i.e., intronic insertions of >100 copies of pentanucleotide repeats including a (TGGAA)_n sequence) are associated with spinocerebellar ataxia type 31. Alternatively spliced transcript variants encoding different isoforms have been found for this gene.

Synonyms:

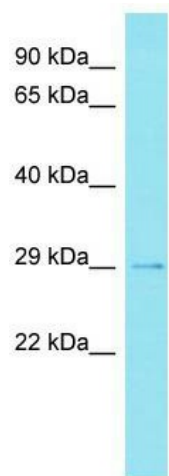
BEAN; SCA31

Note:

Immunogen sequence homology: Human: 100%

Protein Families:

Transmembrane

Product images:

Host: Rabbit; Target Name: BEAN1; Sample Tissue: 721_B Whole Cell lysates; Antibody Dilution: 1.0 ug/ml. BEAN1 is supported by BioGPS gene expression data to be expressed in 721_B