

## Product datasheet for **TA334072**

### **CARD8 Rabbit Polyclonal Antibody**

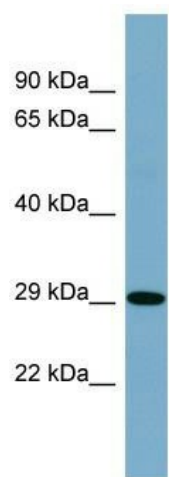
#### **Product data:**

<b>Product Type:</b>	Primary Antibodies
<b>Applications:</b>	WB
<b>Recommended Dilution:</b>	WB
<b>Reactivity:</b>	Human
<b>Host:</b>	Rabbit
<b>Isotype:</b>	IgG
<b>Clonality:</b>	Polyclonal
<b>Immunogen:</b>	The immunogen for Anti-CARD8 Antibody is: synthetic peptide directed towards the N-terminal region of Human CARD8. Synthetic peptide located within the following region: LGGTFPGDICSEENQIVSSYASKVCFEIEEDYKNRQFLGPEGNVDVELID
<b>Formulation:</b>	Liquid. Purified antibody supplied in 1x PBS buffer with 0.09% (w/v) sodium azide and 2% sucrose. <i>Note that this product is shipped as lyophilized powder to China customers.</i>
<b>Purification:</b>	Affinity Purified
<b>Conjugation:</b>	Unconjugated
<b>Storage:</b>	Store at -20°C as received.
<b>Stability:</b>	Stable for 12 months from date of receipt.
<b>Predicted Protein Size:</b>	31 kDa
<b>Gene Name:</b>	caspase recruitment domain family member 8
<b>Database Link:</b>	<a href="#">NP_001171829</a> <a href="#">Entrez Gene 22900 Human</a> <a href="#">Q9Y2G2</a>



[View online »](#)

<b>Background:</b>	The protein encoded by this gene belongs to the caspase recruitment domain (CARD)-containing family of proteins, which are involved in pathways leading to activation of caspases or nuclear factor kappa-B (NFkB). This protein may be a component of the inflammasome, a protein complex that plays a role in the activation of proinflammatory caspases. It is thought that this protein acts as an adaptor molecule that negatively regulates NFkB activation, CASP1-dependent IL1B secretion, and apoptosis. Polymorphisms in this gene may be associated with a susceptibility to rheumatoid arthritis. Alternatively spliced transcript variants have been described for this gene.
<b>Synonyms:</b>	CARDINAL; DACAR; DAKAR; NDPP; NDPP1; TUCAN
<b>Note:</b>	Immunogen sequence homology: Human: 100%
<b>Protein Families:</b>	Druggable Genome
<b>Protein Pathways:</b>	NOD-like receptor signaling pathway

**Product images:**

Host: Rabbit; Target Name: CARD8; Sample Tissue: Fetal spleen lysates; Antibody Dilution: 1.0 ug/ml