

Product datasheet for **TA334071**

SLC26A8 Rabbit Polyclonal Antibody

Product data:

| | |
|-------------------------|---|
| Product Type: | Primary Antibodies |
| Applications: | IHC, WB |
| Recommended Dilution: | WB, IHC |
| Reactivity: | Human |
| Host: | Rabbit |
| Isotype: | IgG |
| Clonality: | Polyclonal |
| Immunogen: | The immunogen for Anti-SLC26A8 Antibody: synthetic peptide directed towards the C terminal of human SLC26A8. Synthetic peptide located within the following region: EPQPETEPEMEPNPKSRPRAHTFPQQRYPWPMYHPSMASTQSQTQTRTWSV |
| Formulation: | Liquid. Purified antibody supplied in 1x PBS buffer with 0.09% (w/v) sodium azide and 2% sucrose. <i>Note that this product is shipped as lyophilized powder to China customers.</i> |
| Purification: | Affinity Purified |
| Conjugation: | Unconjugated |
| Storage: | Store at -20°C as received. |
| Stability: | Stable for 12 months from date of receipt. |
| Predicted Protein Size: | 61 kDa |
| Gene Name: | solute carrier family 26 member 8 |
| Database Link: | NP_001180405 Entrez Gene 116369 Human Q96RN1 |
| Background: | SLC26A8 is one member of a family of sulfate/anion transporters. Family members are well conserved in their protein (aa length among species) structures yet have markedly different tissue expression patterns. |
| Synonyms: | SPGF3; TAT1 |
| Note: | Immunogen sequence homology: Human: 100% |



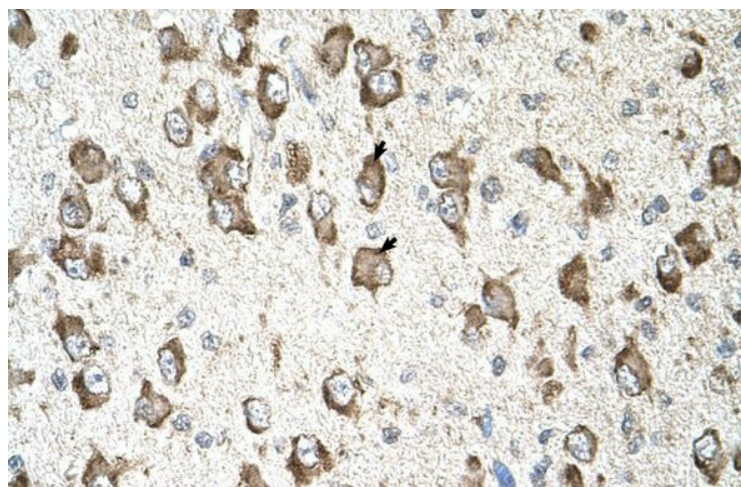
[View online »](#)

Protein Families: Transmembrane

Product images:



WB Suggested Anti-SLC26A8 Antibody Titration:
5.0 ug/ml; Positive Control: Jurkat cell lysate



Human Brain