

Product datasheet for **TA334070**

SLC26A8 Rabbit Polyclonal Antibody

Product data:

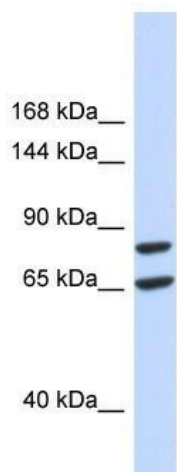
Product Type:	Primary Antibodies
Applications:	WB
Recommended Dilution:	WB
Reactivity:	Human
Host:	Rabbit
Isotype:	IgG
Clonality:	Polyclonal
Immunogen:	The immunogen for Anti-SLC26A8 Antibody is: synthetic peptide directed towards the middle region of Human SLC26A8. Synthetic peptide located within the following region: VPYTVSSVSQKNQGQQYEEVEEWLPNNSSRNSSPGLPDVAESQGRRSLI
Formulation:	Liquid. Purified antibody supplied in 1x PBS buffer with 0.09% (w/v) sodium azide and 2% sucrose. <i>Note that this product is shipped as lyophilized powder to China customers.</i>
Purification:	Affinity Purified
Conjugation:	Unconjugated
Storage:	Store at -20°C as received.
Stability:	Stable for 12 months from date of receipt.
Predicted Protein Size:	60 kDa
Gene Name:	solute carrier family 26 member 8
Database Link:	NP_001180405 Entrez Gene 116369 Human Q96RN1
Background:	SLC26A8 is one member of a family of sulfate/anion transporters. Family members are well conserved in their protein (aa length among species) structures yet have markedly different tissue expression patterns.
Synonyms:	SPGF3; TAT1
Note:	Immunogen sequence homology: Human: 100%



[View online »](#)

Protein Families: Transmembrane

Product images:



Host: Rabbit; Target Name: SLC26A8; Sample
Tissue: 293T Whole Cell lysates; Antibody
Dilution: 1.0 ug/ml