

Product datasheet for **TA334069**

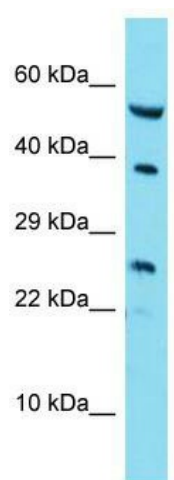
RAB42 Rabbit Polyclonal Antibody

Product data:

Product Type:	Primary Antibodies
Applications:	WB
Recommended Dilution:	WB
Reactivity:	Human
Host:	Rabbit
Isotype:	IgG
Clonality:	Polyclonal
Immunogen:	The immunogen for Anti-RAB42 Antibody is: synthetic peptide directed towards the C-terminal region of Human RAB42. Synthetic peptide located within the following region: AFDTLDAIQQALQQGDIKLEEGWGGVRLIHKTIQIPRSPSRKQHSGPCQC
Formulation:	Liquid. Purified antibody supplied in 1x PBS buffer with 0.09% (w/v) sodium azide and 2% sucrose.
Purification:	Affinity Purified
Conjugation:	Unconjugated
Storage:	Store at -20°C as received.
Stability:	Stable for 12 months from date of receipt.
Predicted Protein Size:	24 kDa
Gene Name:	RAB42, member RAS oncogene family
Database Link:	NP_001180461 Entrez Gene 115273 Human Q8N4Z0
Background:	The function of this protein remains unknown.
Synonyms:	RP4-669K10.6
Note:	Immunogen sequence homology: Human: 100%; Rabbit: 86%; Pig: 79%; Mouse: 79%; Guinea pig: 79%; Horse: 77%



[View online »](#)

Product images:


Host: Rabbit; Target Name: RAB42; Sample
Tissue: A549 Whole Cell lysates; Antibody
Dilution: 1.0 ug/ml.