

Product datasheet for **TA334068**

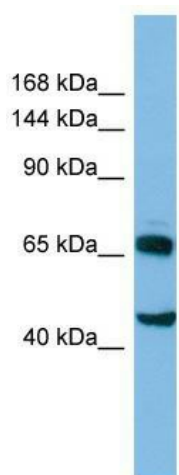
CLASP2 Rabbit Polyclonal Antibody

Product data:

Product Type:	Primary Antibodies
Applications:	WB
Recommended Dilution:	WB
Reactivity:	Human
Host:	Rabbit
Isotype:	IgG
Clonality:	Polyclonal
Immunogen:	The immunogen for Anti-CLASP2 Antibody is: synthetic peptide directed towards the C-terminal region of Human CLASP2. Synthetic peptide located within the following region: AGRVSAGSSKASSLPGSLQRSRSDIDVNAAAGAKAHHAAGQSVRRGRLGA
Formulation:	Liquid. Purified antibody supplied in 1x PBS buffer with 0.09% (w/v) sodium azide and 2% sucrose. <i>Note that this product is shipped as lyophilized powder to China customers.</i>
Purification:	Affinity Purified
Conjugation:	Unconjugated
Storage:	Store at -20°C as received.
Stability:	Stable for 12 months from date of receipt.
Predicted Protein Size:	47 kDa
Gene Name:	cytoplasmic linker associated protein 2
Database Link:	NP_001193973 Entrez Gene 23122 Human O75122
Background:	The function of this protein remains unknown.
Synonyms:	hOrbit2; KIAA0627
Note:	Immunogen sequence homology: Dog: 100%; Pig: 100%; Rat: 100%; Horse: 100%; Human: 100%; Mouse: 100%; Bovine: 100%; Rabbit: 100%; Zebrafish: 100%; Guinea pig: 100%



[View online »](#)

Product images:

Host: Rabbit; Target Name: CLASP2; Sample Tissue: HT1080 Whole cell lysates; Antibody Dilution: 1.0 ug/ml; CLASP2 is strongly supported by BioGPS gene expression data to be expressed in Human HT1080 cells