

Product datasheet for **TA334067**

INPP5F Rabbit Polyclonal Antibody

Product data:

Product Type:	Primary Antibodies
Applications:	WB
Recommended Dilution:	WB
Reactivity:	Human
Host:	Rabbit
Isotype:	IgG
Clonality:	Polyclonal
Immunogen:	The immunogen for Anti-INPP5F Antibody is: synthetic peptide directed towards the N-terminal region of Human INPP5F. Synthetic peptide located within the following region: VCKVTKIAVLSLSEMPEQDLELELCKKHHFGINKPEKIIPSPDDSKFLLK
Formulation:	Liquid. Purified antibody supplied in 1x PBS buffer with 0.09% (w/v) sodium azide and 2% sucrose. <i>Note that this product is shipped as lyophilized powder to China customers.</i>
Purification:	Affinity Purified
Conjugation:	Unconjugated
Storage:	Store at -20°C as received.
Stability:	Stable for 12 months from date of receipt.
Predicted Protein Size:	41 kDa
Gene Name:	inositol polyphosphate-5-phosphatase F
Database Link:	NP_001230123 Entrez Gene 22876 Human Q9Y2H2
Background:	The protein encoded by this gene is an inositol 1,4,5-trisphosphate (InsP3) 5-phosphatase and contains a Sac domain. The activity of this protein is specific for phosphatidylinositol 4,5-bisphosphate and phosphatidylinositol 3,4,5-trisphosphate. Alternatively spliced transcript variants encoding multiple isoforms have been observed for this gene.
Synonyms:	hSAC2; MSTP007; MSTPO47; SAC2

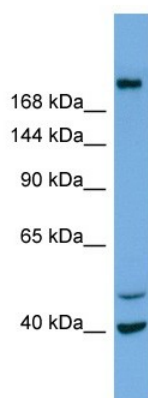


[View online »](#)

Note: Immunogen sequence homology: Pig: 100%; Rat: 100%; Horse: 100%; Human: 100%; Mouse: 100%; Rabbit: 100%; Guinea pig: 100%; Dog: 93%

Protein Families: Druggable Genome

Product images:



Sample Tissue: NCI-H226 whole cell lysates;
Antibody Dilution: 1.0 ug/mL