

Product datasheet for **TA334064**

MCT2 (SLC16A7) Rabbit Polyclonal Antibody

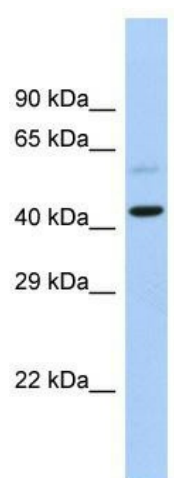
Product data:

Product Type:	Primary Antibodies
Applications:	WB
Recommended Dilution:	WB
Reactivity:	Human
Host:	Rabbit
Isotype:	IgG
Clonality:	Polyclonal
Immunogen:	The immunogen for Anti-SLC16A7 Antibody is: synthetic peptide directed towards the C-terminal region of Human SLC16A7. Synthetic peptide located within the following region: LAGKLVDLTGEYKMYMSCGAIVVAASVWLLIGNAINYRLLAKERKEENA
Formulation:	Liquid. Purified antibody supplied in 1x PBS buffer with 0.09% (w/v) sodium azide and 2% sucrose. <i>Note that this product is shipped as lyophilized powder to China customers.</i>
Purification:	Affinity Purified
Conjugation:	Unconjugated
Storage:	Store at -20°C as received.
Stability:	Stable for 12 months from date of receipt.
Predicted Protein Size:	41 kDa
Gene Name:	solute carrier family 16 member 7
Database Link:	NP_001257551 Entrez Gene 9194 Human O60669
Background:	The function of this protein remains unknown.
Synonyms:	MCT2
Note:	Immunogen sequence homology: Human: 100%; Dog: 86%; Horse: 86%; Mouse: 86%; Bovine: 86%; Rabbit: 85%; Pig: 79%; Rat: 79%; Zebrafish: 79%; Guinea pig: 75%
Protein Families:	Transmembrane



[View online »](#)

Product images:



Host: Rabbit; Target Name: SLC16A7; Sample Tissue: Fetal Heart lysates; Antibody Dilution: 1.0 ug/ml