

Product datasheet for **TA334063**

ELP4 Rabbit Polyclonal Antibody

Product data:

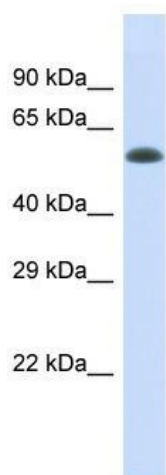
Product Type:	Primary Antibodies
Applications:	WB
Recommended Dilution:	WB
Reactivity:	Human
Host:	Rabbit
Isotype:	IgG
Clonality:	Polyclonal
Immunogen:	The immunogen for Anti-ELP4 Antibody is: synthetic peptide directed towards the C-terminal region of Human ELP4. Synthetic peptide located within the following region: TMPTHLIQNKAIARVTTLSDVWVGLEFIGSERETNPLYKDYHGLIHIR
Formulation:	Liquid. Purified antibody supplied in 1x PBS buffer with 0.09% (w/v) sodium azide and 2% sucrose. <i>Note that this product is shipped as lyophilized powder to China customers.</i>
Purification:	Affinity Purified
Conjugation:	Unconjugated
Storage:	Store at -20°C as received.
Stability:	Stable for 12 months from date of receipt.
Predicted Protein Size:	58 kDa
Gene Name:	elongator acetyltransferase complex subunit 4
Database Link:	NP_001275654 Entrez Gene 26610 Human Q96EB1
Background:	This gene encodes a component of the six subunit elongator complex, a histone acetyltransferase complex that associates directly with RNA polymerase II during transcriptional elongation. The human gene can partially complement sensitivity phenotypes of yeast ELP4 deletion mutants. Alternatively spliced variants that encode different protein isoforms have been described but the full-length nature of only one has been determined.
Synonyms:	AN; C11orf19; dj68P15A.1; hELP4; PAX6NEB; PAXNEB



[View online »](#)

Note: Immunogen sequence homology: Dog: 100%; Pig: 100%; Rat: 100%; Human: 100%; Mouse: 100%; Rabbit: 100%; Bovine: 93%; Zebrafish: 93%; Guinea pig: 93%; Horse: 86%

Product images:



Host: Rabbit; Target Name: ELP4; Sample Tissue: Fetal Heart lysates; Antibody Dilution: 1.0 ug/ml