

Product datasheet for **TA334062**

CDC2L6 (CDK19) Rabbit Polyclonal Antibody

Product data:

Product Type:	Primary Antibodies
Applications:	WB
Recommended Dilution:	WB
Reactivity:	Human
Host:	Rabbit
Isotype:	IgG
Clonality:	Polyclonal
Immunogen:	The immunogen for Anti-CDK19 Antibody is: synthetic peptide directed towards the C-terminal region of Human CDK19. Synthetic peptide located within the following region: LLTMDPTKRITSEQALQDPYFQEDPLPTLDVDFAGCQIPYPKREFLNEDDP
Formulation:	Liquid. Purified antibody supplied in 1x PBS buffer with 0.09% (w/v) sodium azide and 2% sucrose. <i>Note that this product is shipped as lyophilized powder to China customers.</i>
Purification:	Affinity Purified
Conjugation:	Unconjugated
Storage:	Store at -20°C as received.
Stability:	Stable for 12 months from date of receipt.
Predicted Protein Size:	48 kDa
Gene Name:	cyclin-dependent kinase 19
Database Link:	NP_001287889 Entrez Gene 23097 Human Q9BWU1
Background:	This gene encodes a protein that is one of the components of the Mediator coactivator complex. The Mediator complex is a multiprotein complex required for transcriptional activation by DNA binding transcription factors of genes transcribed by RNA polymerase II. The protein encoded by this gene is similar to cyclin-dependent kinase 8 which can also be a component of the Mediator complex.
Synonyms:	bA346C16.3; CDC2L6; CDK11

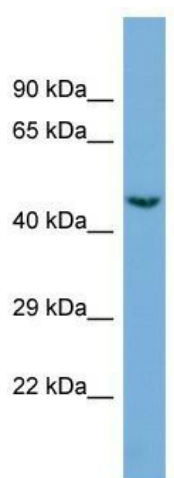


[View online »](#)

Note: Immunogen sequence homology: Dog: 100%; Pig: 100%; Rat: 100%; Horse: 100%; Human: 100%; Mouse: 100%; Bovine: 100%; Rabbit: 100%; Guinea pig: 100%; Zebrafish: 93%

Protein Families: Druggable Genome, Protein Kinase

Product images:



Host: Rabbit; Target Name: CDK19; Sample Tissue: Jurkat Whole Cell lysates; Antibody Dilution: 1.0 ug/ml