

Product datasheet for TA334061

Claudin 7 (CLDN7) Rabbit Polyclonal Antibody

Product data:

Product Type:	Primary Antibodies
Applications:	WB
Recommended Dilution:	WB
Reactivity:	Human
Host:	Rabbit
Isotype:	IgG
Clonality:	Polyclonal
Immunogen:	The immunogen for Anti-CLDN7 Antibody: synthetic peptide directed towards the middle region of human CLDN7. Synthetic peptide located within the following region: GPAIFIGWAGSALVILGGALLSCSCPGNESKAGYRVPRSYPKSNSKEYV
Formulation:	Liquid. Purified antibody supplied in 1x PBS buffer with 0.09% (w/v) sodium azide and 2% sucrose. <i>Note that this product is shipped as lyophilized powder to China customers.</i>
Purification:	Affinity Purified
Conjugation:	Unconjugated
Storage:	Store at -20°C as received.
Stability:	Stable for 12 months from date of receipt.
Predicted Protein Size:	22 kDa
Gene Name:	claudin 7
Database Link:	NP_001298 Entrez Gene 1366 Human O95471



[View online »](#)

Background: Claudins, such as CLDN7, are involved in the formation of tight junctions between epithelial cells. Tight junctions restrict lateral diffusion of lipids and membrane proteins, and thereby physically define the border between the apical and basolateral compartments of epithelial cells. Claudins, such as CLDN7, are involved in the formation of tight junctions between epithelial cells. Tight junctions restrict lateral diffusion of lipids and membrane proteins, and thereby physically define the border between the apical and basolateral compartments of epithelial cells (Zheng et al., 2003 [PubMed 14502431]). [supplied by OMIM]. Publication Note: This RefSeq record includes a subset of the publications that are available for this gene. Please see the Entrez Gene record to access additional publications.

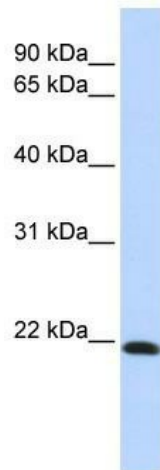
Synonyms: CEPTRL2; claudin-1; CLDN-7; CPETRL2; Hs.84359

Note: Immunogen sequence homology: Human: 100%; Rat: 93%; Mouse: 93%; Rabbit: 86%; Dog: 79%; Pig: 79%; Horse: 79%; Sheep: 79%; Bovine: 79%; Yeast: 77%

Protein Families: Transmembrane

Protein Pathways: Cell adhesion molecules (CAMs), Leukocyte transendothelial migration, Tight junction

Product images:



WB Suggested Anti-CLDN7 Antibody Titration:
0.2-1 ug/ml; ELISA Titer: 1:312500; Positive
Control: Human Lung