

## Product datasheet for **TA334059**

### SLC37A4 Rabbit Polyclonal Antibody

#### Product data:

Product Type:	Primary Antibodies
Applications:	IHC, WB
Recommended Dilution:	WB
Reactivity:	Human
Host:	Rabbit
Isotype:	IgG
Clonality:	Polyclonal
Immunogen:	The immunogen for Anti-SLC37A4 Antibody: synthetic peptide directed towards the N terminal of human SLC37A4. Synthetic peptide located within the following region: LVVEIPLDKDDLGFITSSQSAAYAISKFVSGVLSQMSARWLFSSGLLLV
Formulation:	Liquid. Purified antibody supplied in 1x PBS buffer with 0.09% (w/v) sodium azide and 2% sucrose. <i>Note that this product is shipped as lyophilized powder to China customers.</i>
Purification:	Affinity Purified
Conjugation:	Unconjugated
Storage:	Store at -20°C as received.
Stability:	Stable for 12 months from date of receipt.
Predicted Protein Size:	46 kDa
Gene Name:	solute carrier family 37 member 4
Database Link:	<a href="#">NP_001458</a> <a href="#">Entrez Gene 2542 Human</a> <a href="#">O43826</a>
Background:	SLC37A4 transports glucose-6-phosphate from the cytoplasm to the lumen of the endoplasmic reticulum. It forms with glucose-6-phosphatase the complex responsible for glucose production through glycogenolysis and gluconeogenesis. Hence, it plays a central role in homeostatic regulation of blood glucose levels.
Synonyms:	G6PT1; G6PT2; G6PT3; GSD1b; GSD1c; GSD1d; PRO0685; TRG-19; TRG19

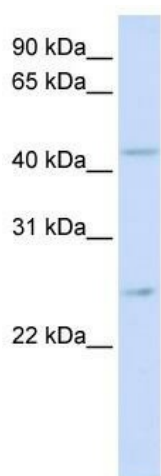


[View online »](#)

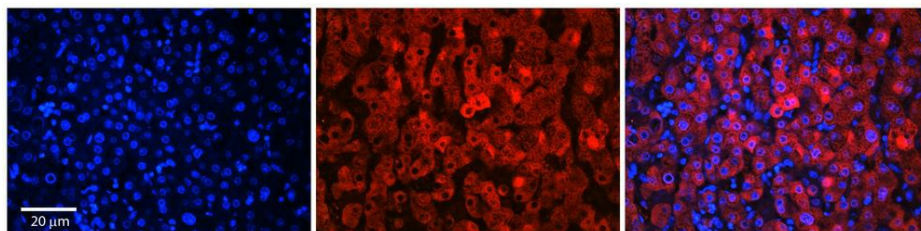
**Note:** Immunogen sequence homology: Dog: 100%; Human: 100%; Bovine: 100%; Pig: 93%; Rat: 93%; Horse: 93%; Rabbit: 93%; Mouse: 86%; Guinea pig: 86%

**Protein Families:** Transmembrane

**Product images:**



WB Suggested Anti-SLC37A4 Antibody Titration: 0.2-1 ug/ml; ELISA Titer: 1:312500; Positive Control: Human brain



Rabbit Anti-SLC37A4 Antibody; Formalin Fixed Paraffin Embedded Tissue: Human Adult Liver; Observed Staining: Cytoplasm in hepatocytes, moderate tissue distribution; Primary Antibody Concentration: 1:100; Secondary Antibody: Donkey anti-Rabbit-Cy3; Seconda