

Product datasheet for **TA334058**

ADA2a (TADA2A) Rabbit Polyclonal Antibody

Product data:

| | |
|-------------------------|--|
| Product Type: | Primary Antibodies |
| Applications: | WB |
| Recommended Dilution: | WB |
| Reactivity: | Human |
| Host: | Rabbit |
| Isotype: | IgG |
| Clonality: | Polyclonal |
| Immunogen: | The immunogen for Anti-TADA2L Antibody: synthetic peptide directed towards the C terminal of human TADA2L. Synthetic peptide located within the following region: RRQADIDSGLSIPMASNSGRRSAPPLNLTGLPGTEKLNEKEKELCQMV |
| Formulation: | Liquid. Purified antibody supplied in 1x PBS buffer with 0.09% (w/v) sodium azide and 2% sucrose. <i>Note that this product is shipped as lyophilized powder to China customers.</i> |
| Purification: | Affinity Purified |
| Conjugation: | Unconjugated |
| Storage: | Store at -20°C as received. |
| Stability: | Stable for 12 months from date of receipt. |
| Predicted Protein Size: | 51 kDa |
| Gene Name: | transcriptional adaptor 2A |
| Database Link: | NP_001479 Entrez Gene 6871 Human O75478 |
| Background: | Many DNA-binding transcriptional activator proteins enhance the initiation rate of RNA polymerase II-mediated gene transcription by interacting functionally with the general transcription machinery bound at the basal promoter. Adaptor proteins are usually required for this activation, possibly to acetylate and destabilize nucleosomes, thereby relieving chromatin constraints at the promoter. TADA2L is a transcriptional activator adaptor and has been found to be part of the PCAF histone acetylase complex. |



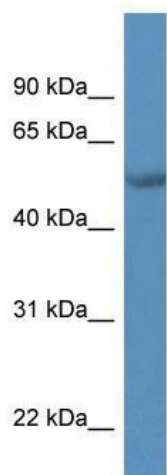
[View online »](#)

Synonyms: ADA2; ADA2A; hADA2; KL04P; TADA2L

Note: Immunogen sequence homology: Chicken: 100%

Protein Families: Transcription Factors

Product images:



WB Suggested Anti-TADA2L Antibody Titration:
0.2-1 ug/ml; ELISA Titer: 1:62500; Positive Control:
MCF7 cell lysate